



# Sponges & Bolsters

2020  
PRODUCT  
GUIDE

## CHECK OUT WHAT'S NEW FOR 2020

Techno-Aide is ready to kick 2020 off with some amazing new products! Here are a few key highlights you can't afford to miss!

### **New Closed Cell Sponge Expansion | PG.3**

Techno-Aide now offers over 30 standard closed cell sponges in the most popular shapes and sizes! Shop our enormous in-stock inventory of individual closed cell sponges and kits!

#### **Closed Cell foam is the future of positioning sponges and the facts speak for themselves**

- Cleanable, non-porous surface
- Lighweight and comfortable
- Completely Artifact Free
- 100% radiolucent foam
- Extremely durable



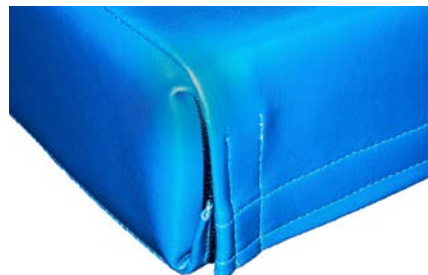
### **Completely Sealed Vinyl Bolsters | PG.17**

Our vinyl fabric is now sewn and welded at all seams to offer a completely sealed and secure bolster! These premium sealed corners inhibit the growth of any harmful bacteria inside and out. Compared to other unsealed and unsanitary, "hook and loop" closures, these bolsters are the clear and easy choice.

Completely Sealed



Unsealed & Unsanitary



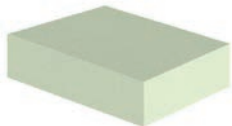
## Picking the Perfect Positioning Aid

Techno-Aide is here to help you find the perfect positioning aid! Our sponges are specially designed to meet any need! Below will be everything you need to know about our sponge options and how to choose the perfect fit.

### STEP 1: WHAT TYPE OF SPONGE DO YOU NEED?

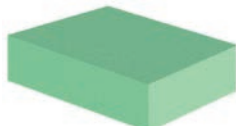
#### Uncoated Foam

Basic (core), open-cell foam. Non-coated, non-cleanable surface. The least durable and least expensive foam.



#### Coated Foam

Fluid-resistant, cleanable coating over standard (core) foam core. Minimal shadowing with low attenuation. Light green.



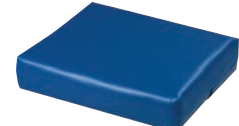
#### Closed Cell Foam

**Our most popular foam!** Artifact free, cleanable surface, lightweight and durable. Our top option! Charcoal grey.



#### Vinyl Covered Foam

Firm foam with a heavy-duty vinyl covering. Ideal for extreme patient comfort and durability. Blue vinyl.



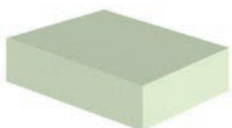
Go to steps 2 & 3!

Skip to step 4!

### STEP 2: FOAM TYPES

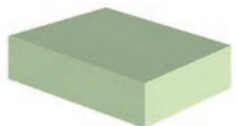
#### Standard Foam

Standard open-cell foam for general positioning. Light and comfortable option for basic imaging.



#### Firm/Bariatric Foam

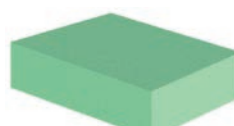
A higher density open-cell foam than standard foam. Typically used to support larger/heavier/bariatric patients for positioning.



### STEP 3: ARTIFACTS?

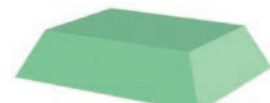
#### Non-Flared Sides

**Non-flared sponges may show artifacts under imaging, specifically when coating is applied.**



#### Flared Sides

**Stealth™** sponges are designed with proprietary angles to offer **artifact-free** viewing. Flared sides will increase size!



### STEP 4: PICK A SHAPE AND SIZE!

Different imaging procedures require different designs. Techno-Aide is proud to offer the largest selection of standard and specialty sponges available. We offer hundreds of sponges designed for spinal, epidural, cardiac, echocardiography, extremity, cervical, AP/PA, decubitus, ultrasound, phlebotomy, CT, podiatry and many more! Starting on page 3, shop the rest of this catalog for our most popular options or submit for a custom quote today!

## NEW Closed Cell Positioning Sponges

Closed cell foam is the future of radiology. This cleanable, non-porous foam is completely radiolucent. The charcoal grey, low density foam is extremely durable and comfortable for patients. Closed cell sponges offer 100% artifact free imaging.

### STOCKED SPONGES

CAT.#	Description	Size (W x L x H)
YXBC	45° Wedge	7" x 7" x 7"
YXBB	45° Wedge	7" x 14" x 7"
YXBD	45° Wedge	7" x 21" x 7"
YXEA	45° Wedge	9.5" x 24" x 9.5"
YX16	45° Wedge	9" x 30" x 9"
YXBU	30°/60°/90° Wedge	24" x 10" x 6"
YXBE	34° Wedge	7" x 4" x 3"
YXBJ	12° Wedge Set	9.5" x 7.25" x 2.25"
YXBI	15° Wedge Set	7" x 10" x 2"
YXAJ	Knee Wedge	22" x 13.5" x 7"
YXAK	7" Head Circle	7" Diameter
YXAA	Oblique Finger	5" x 5" x 3"
YXAT	Angular Bolster	16" x 12" x 7"
YXUZ	Ultrasound Wedge	20" x 20" x 6"
YXBV	Rectangle	2" x 6" x 6"
YXMB	Rectangle	1" x 8" x 10"
YXBN	Rectangle	3" x 14" x 18"
YXBL	Rectangle	3" x 7.5" x 10"
YXGM	Rectangle	4" x 18" x 24"

**Stocked sponges  
are marked Blue!**

### NON-STOCKED SPONGES

CAT.#	Description	Size (W x L x H)
YXAB	Finger	11" x 5" x 3"
YXAC	Finger	7.5" x 4" x 1.875"
YXAD	Finger	13" x 5.5" x 2.75"
YXAE	Finger	7.25" x 3" x 2.75"
YX126	Knee Block	6" x 8" x 10"
YXAG	Bilateral Leg Immobilizer	6" x 14" x 16"
YXAY	Angular Bolster	16" x 12.5" x 7.25"

### NON-STOCKED SPONGES

CAT.#	Description	Size (W x L x H)
YX278	Square	12" x 12" x 12"
YX277	Square	10" x 10" x 10"
YX100	Rectangle	10" x 14" x 17"
YX169	Rectangle	6" x 18" x 42"
YX73	Rectangle	6" x 18" x 22"
YX126	Rectangle	6" x 8" x 10"
YX105	Rectangle	6" x 8" x 12"
YX70	Rectangle	5" x 10" x 24"
YX58	Rectangle	5" x 14" x 17"
YX67	Rectangle	5" x 3" x 7"
YX71	Rectangle	4" x 10" x 20"
YX62	Rectangle	4" x 10" x 14"
YX03	Rectangle	4" x 6" x 6"
YX250	Rectangle	3" x 9" x 24"
YX204	Rectangle	3" x 12" x 14"
YX156	Rectangle	3" x 6" x 6"
YX266	Rectangle	4" x 18" x 36"
YX06	Rectangle	2" x 8" x 24"
YX246	Rectangle	2" x 14" x 18"
YX29	Rectangle	2" x 8" x 16"
YXGF	Rectangle	2" x 10" x 12"
YXBT	Rectangle	2" x 4" x 6"
YXBR	Rectangle	1" x 4" x 6"
YXER	Rectangle	1" x 4" x 12"
YXBQ	Rectangle	0.5" x 4" x 6"
YXBH	16° Wedge Set	3.5" x 8" x 7"
YXBG	21° Wedge	4.625" x 10" x 10"
YXBF	27° Wedge	6" x 10" x 10"
YX51	33° Wedge	6.6" x 9" x 12"
YX167	45° Wedge	10" x 10" x 14"
YX56	45° Wedge	9.5" x 13.75" x 24"
YX209	45° Wedge	6" x 12" x 38"
YX75	45° Wedge	10" x 10" x 16"
YX76	45° Wedge	3" x 8" x 3"
YXCA	Trough Wedge	Small - 4" x 10" x 3"
YXCB	Trough Wedge	Medium - 7" x 15" x 5"
YXCC	Trough Wedge	Large - 11" x 24" x 7"
YXCD	Trough Wedge	X-Large - 14" x 36" x 9"

## NEW Orthopedic Leg Length Discrepancy Block Kit

Convenient and practical method for the assessing and testing of patients with leg length discrepancy. Nine closed cell foam blocks are graded by half centimeters (1cm to 5cm). The block is placed under the foot of the shorter leg, to achieve proper position of the pelvis for leg, spine, and pelvis x-rays in the standing position. The image is best performed with blocks under the short limb to level the pelvis, to avoid unwanted adjustments by the patient to their hips, knees or ankles.

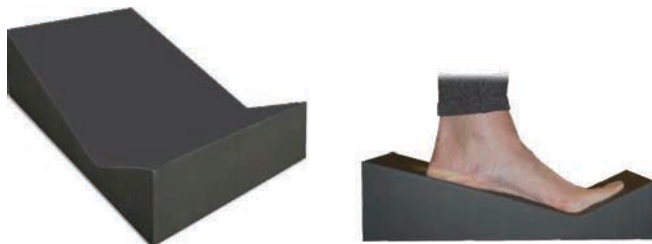
YZLL			
CAT#	Width x Length (in)	Height (cm)	QTY
YXLL01	10" x 14"	1 cm	1
YXLL15	10" x 14"	1.5 cm	1
YXLL02	10" x 14"	2 cm	1
YXLL25	10" x 14"	2.5 cm	1
YXLL03	10" x 14"	3 cm	1
YXLL35	10" x 14"	3.5 cm	1
YXLL04	10" x 14"	4 cm	1
YXLL45	10" x 14"	4.5 cm	1
YXLL05	10" x 14"	5 cm	1



## Podiatry Axial/Sesamoid Closed Cell Sponge

Designed specifically to view metatarsals, sesamoids and plantar condyles. Made of our 2 lb., non-porous, cleanable, fluid resistant closed cell foam. Charcoal grey in color.

#YXNZ |  
8" x 13" x 4"



## NEW Closed Cell Specialty Knee Bolster

Designed to support patients upper thigh and knees during imaging procedures. Helps to alleviate pressure on the lower back providing extra comfort.

#YXKB |  
16" x 25" x 8.25"



## NEW Weight Bearing Receptor Holder

**NEW** Two options to accommodate nearly EVERY receptor type!  
Economic solution for weight bearing examinations. Durable 6 lb closed cell provides support for weight bearing studies.

CAT#	Sponge Dimensions	Typical Receptor Size
YXWB	11.5"(W) x 17.5"(L) x 4"(H)	10" x 12"
<b>YXW-18</b>	<b>18"(W) x 17.5"(L) x 4"(H)</b>	<b>14" x 17"</b>



**Channel is 1 3/16" wide**  
to accommodate most  
imaging receptors.

## NEW Closed Cell Positioning Sponge Kits

Closed cell foam is the future of radiology. This cleanable, non-porous foam is completely radiolucent. The charcoal grey, low density foam is extremely durable and comfortable for patients. Closed cell sponges offer 100% artifact free imaging.

### STOCKED KITS

#### GENERAL KIT 1 | YZCC

CAT.#	Description	Size (W x L x H)	QTY
YXBD	45° Degree Body Wedge	7" x 21" x 7"	1
YXAA	Oblique Finger Block	5" x 5" x 3"	1
YXAK	Circular Head Block	7" Diam.	1
YXBI	15° Degree Wedge Set	7" x 10" x 2"	1
YXBV	Rectangle Block	6" x 6" x 2"	1
YXMB	Rectangle Block	8" x 10" x 2"	1
YXBN	Rectangle Block	14" x 18" x 3"	1

#### GENERAL KIT A | YZGA

CAT.#	Description	Size (W x L x H)	QTY
YXBC	45° Degree Body Wedge	7" x 7" x 7"	1
YXAK	Circular Head Block	7" Diam.	1
YXBI	15° Degree Wedge Set	7" x 10" x 2"	1
YXBE	34° Degree Wedge Set	7" x 4" x 3"	1
YXBL	Rectangle	4" x 18" x 24"	1

#### GENERAL KIT B | YZGB

CAT.#	Description	Size (W x L x H)	QTY
YXBC	45° Degree Body Wedge	7" x 7" x 7"	1
YXAA	Oblique Finger Block	5" x 5" x 3"	1
YXAK	Circular Head Block	7" Diam.	1
YXBI	15° Degree Wedge Set	7" x 10" x 2"	1
YXBE	34° Degree Wedge Set	7" x 4" x 3"	1
YXBJ	12° Degree Wedge Set	9.5" x 7.25" x 3"	1
YXBL	Rectangle Block	3" x 7.5" x 10"	1

### NON-STOCKED KITS

#### GENERAL KIT 2 | YZG2

CAT.#	Description	Size (W x L x H)	QTY
YXAK	Circular Head Block	7" Diam.	1
YXMB	Rectangle Block	8" x 10" x 2"	2
YXBE	34° Degree Wedge Set	7" x 4" x 3"	1
YXBH	16° Degree Wedge Set	3.5" x 8" x 7"	1
YXBC	45° Degree Body Wedge	7" x 7" x 7"	1

#### TRIANGLE WEDGE KIT | YZTK

CAT.#	Description	Size (W x L x H)	QTY
YXBG	21° Triangle Wedge	4.6" x 10" x 10"	2
YX51	33° Triangle Wedge	6.6" x 9" x 12"	2
YX167	45° Triangle Wedge	10" x 10" x 14"	1
YXBF	27° Triangle Wedge	6" x 10" x 10"	2

**Stocked sponges  
are marked Blue!**

## NEW Closed Cell Positioning Sponge Kits

Closed cell foam is the future of radiology. This cleanable, non-porous foam is completely radiolucent. The charcoal grey, low density foam is extremely durable and comfortable for patients. Closed cell sponges offer 100% artifact free imaging.

### STOCKED KITS

#### CLINIC KIT A | YZCA

CAT.#	Description	Size (W x L x H)	QTY
YXBB	45° Degree Body Wedge	7" x 14" x 7"	1
YXAA	Oblique Finger Block	5" x 5" x 3"	1
YXAK	Circular Head Block	7" Diam.	1
YXBI	15° Degree Wedge Set	7" x 10" x 2"	1

#### CLINIC KIT B | YZCB

CAT.#	Description	Size (W x L x H)	QTY
YXBD	45° Body Wedge	7" x 21" x 7"	1
YXAA	Oblique Finger Block	5" x 5" x 3"	1
YXAK	Circular Head Block	7" Diam.	1
YXBI	15° Wedge Set	7" x 10" x 2"	1
YXBL	Rectangle	3" x 7.5" x 10"	1
YXBC	45° Body Wedge	7" x 7" x 7"	1
YXBE	34° Wedge Set	7" x 4" x 3"	1
YXBJ	12° Wedge Set	9.5" x 7.25" x 3"	1

#### GENERAL KIT P | YZGP

CAT.#	Description	Size (W x L x H)	QTY
YXBD	45° Body Wedge	7" x 21" x 7"	1
YXAA	Oblique Finger Block	5" x 5" x 3"	1
YXAK	Circular Head Block	7" Diam.	1
YXBI	15° Wedge Set	7" x 10" x 2"	1



#YXAK



#YXBN



#YXBI

### NON-STOCKED KITS

#### ORTHO KIT | YZOR

CAT.#	Description	Size (W x L x H)	QTY
YXNZ	Podiatry Axial Spoge	8" x 13" x 4"	1
YXEA	45° Wedge	9.5" x 24" x 9.5"	2
YXAA	Oblique Finger	5" x 5" x 3"	1
YXBG	21° Wedge	4.6" x 10" x 10"	1
YXAK	7" Head Circle	7" Diam.	1
YXBJ	Knee Wedge Set	9.5" x 7.25" x 2.25"	1
YXFB	Semi-Round Cylinder	8" x 16" x 6"	1
YX59	Cylinder	24" x 8"	1

#### GENERAL KIT | YZVE

CAT.#	Description	Size (W x L x H)	QTY
YXGM	Rectangle	4" x 18" x 24"	1
YX53	33° Triangle Wedge	9.5" x 7.5" x 2"	2
YXBE	34° Wedge Set	7" x 4" x 3"	2
YXBH	16° Wedge Set	3.5" x 8" x 7"	2

#### TROUGH KIT | YZXV

CAT.#	Description	Size (W x L x H)	QTY
YXCA	Trough Wedge	Small - 4" x 10" x 3"	1
YXCB	Trough Wedge	Medium - 7" x 15" x 5"	1
YXCC	Trough Wedge	Large - 11" x 24" x 7"	1
YXCD	Trough Wedge	X-Large - 14" x 36" x 9"	1

## Stealth Flared Positioning Sponges

Revolutionary design minimizes ghosting and line artifacts. Stealth positioning sponges are available coated and non-coated. May be larger than traditional style. Dimensions listed as "Width x Length x Height."

**Stocked sponges are marked Blue!**

### COATED SPONGES

#### STEALTH RECTANGLES

CAT.#	Base (W x L x H)	Top (W x L x H)
YCBL	10.25" x 12.5" x 3"	7.5" x 10"
YCBN	16.25" x 20.5" x 3"	14" x 18"
YCBO	13.5" x 13.5" x 4"	10" x 10"
YCBY	21.5" x 27.5" x 4"	18" x 24"

#### STEALTH WEDGE SETS (TWO EACH)

CAT.#	Degree	Top (W x L x H)	QTY
YCBE	34°	5.5" x 9.75" x 3"	2
YCBJ	12°	10.5" x 9.25" x 2.25"	2
YCBH	16°	8.5" x 11" x 3.5"	2
YCBI	15°	12.5" x 10" x 3"	2

#### STEALTH WEDGES

CAT.#	Degree	Top (W x L x H)
YCBC	45°	10" x 13.5" x 7"
YCBF	27°	12.75" x 15.5" x 6"
YCBG	21°	12.25" x 14.25" x 4.5"
YCBB	45°	10" x 20.25" x 7"
YCEB	45°	10" x 30" x 7.5"
YCEA	45°	13.75" x 33" x 9.5"
YCBD	45°	10" x 27.75" x 7"
YCEE	45°	13" x 38.25" x 9"
YCBU	30°/60°/90°	10" x 29.5" x 6"

### NON-COATED SPONGES

#### STEALTH RECTANGLES

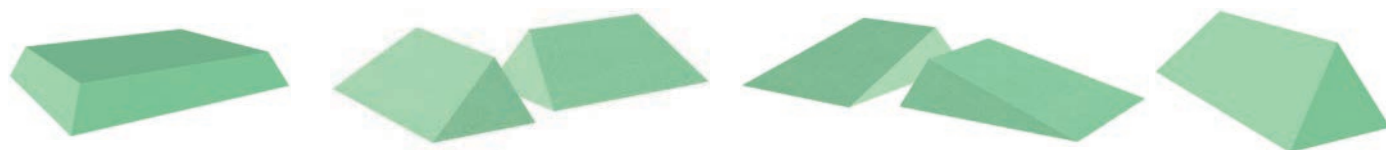
CAT.#	Base (W x L x H)	Top (W x L x H)
YFBL	10.25" x 12.5" x 3"	7.5" x 10"
YFBN	16.25" x 20.5" x 3"	14" x 18"
YFBO	13.5" x 13.5" x 4"	10" x 10"
YFBY	21.5" x 27.5" x 4"	18" x 24"

#### FLARED WEDGE SETS

CAT.#	Degree	Top (W x L x H)	QTY
YFBE	34°	5.5" x 9.75" x 3"	2
YFBJ	12°	10.5" x 9.25" x 2.25"	2
YFBH	16°	8.5" x 11" x 3.5"	2
YFBI	15°	12.5" x 10" x 3"	2

#### STEALTH WEDGES

CAT.#	Degree	Top (W x L x H)
YFBC	45°	10" x 13.5" x 7"
YFBF	27°	12.75" x 15.5" x 6"
YFBG	21°	12.25" x 14.25" x 4.5"
YFBB	45°	10" x 20.25" x 7"
YFEB	45°	10" x 30" x 7.5"
YFEA	45°	13.75" x 33" x 9.5"
YFBD	45°	10" x 27.75" x 7"
YFEE	45°	13" x 38.25" x 9"
YFBU	30°/60°/90°	10" x 29.5" x 6"





## Stealth Flared Positioning Sponges

Revolutionary design minimizes ghosting and line artifacts. Stealth positioning sponges are available coated and non-coated. May be larger than traditional style. Dimensions listed as "Width x Length x Height."

**Stocked sponges are marked Blue!**

### COATED SPONGES

#### STEALTH FINGER BLOCKS

CAT.#	Description/Use
YCAC	Bilateral Pediatric Oblique Finger Block
YCAA	Adult Oblique Finger Block
YCAE	Pediatric Lateral Finger Block
YCAB	Bilateral Adult Oblique Finger Block
YCAD	Adult Lateral Finger Block

#### STEALTH EXTREMITY SPONGES

CAT.#	Description	Size (W x L x H)
YCCB	Medium Extremity Block	11.5" x 19.75" x 5"

#### STEALTH KNEE SPONGES

CAT.#	Description	Size (W x L x H)
YCAH	Knee Arthrogram Block	14.5" x 19" x 8"
YCAJ	Knee Wedge Support	22" x 20" x 7"

### NON-COATED SPONGES

#### STEALTH FINGER BLOCKS

CAT.#	Description/Use
YFAC	Bilateral Pediatric Oblique Finger Block
YFAA	Adult Oblique Finger Block
YFAE	Pediatric Lateral Finger Block
YFAB	Bilateral Adult Oblique Finger Block
YFAD	Adult Lateral Finger Block

#### STEALTH EXTREMITY SPONGES

CAT.#	Description	Size (W x L x H)
YFCB	Medium Extremity Block	11.5" x 19.75" x 5"

#### STEALTH KNEE SPONGES

CAT.#	Description	Size (W x L x H)
YFAH	Knee Arthrogram Block	14.5" x 19" x 8"
YFAJ	Knee Wedge Support	22" x 20" x 7"



#YCAD



#YCAH



#YCCB



#YCAJ

## Stealth Flared Positioning Sponges

Revolutionary design minimizes ghosting and line artifacts. Stealth positioning sponges are available coated and non-coated. May be larger than traditional style. Dimensions listed as "Width x Length x Height."

**Stocked sponges are marked Blue!**

### COATED SPONGES

### NON-COATED SPONGES

#### STEALTH HEAD & NECK SPONGES

CAT.#	Description	Size (W x L x H)
YCAK	Circular Head Block	7-9" Diam. x 1.5" (H)
YCAR	Cervical Head Rest	7.5" x 16" x 4.5"
YCAL	Head & Neck Support	14.5" x 16" x 6.5"
YCAN	AP/PA Child Head Holder	9.75" x 11" x 5"
YCAQ	Child Head Immobilizer	6.75" x 11.5" x 5.25"
YCAM	AP/PA Adult Head Holder	14" x 15" x 6.75"
YCAP	Adult Head Immobilizer	9" x 15.25" x 7"

#### STEALTH HEAD & NECK SPONGES

CAT.#	Description	Size (W x L x H)
YFAK	Circular Head Block	7-9" Diam. x 1.5" (H)
YFAR	Cervical Head Rest	7.5" x 16" x 4.5"
YFAL	Head & Neck Support	14.5" x 16" x 6.5"
YFAN	AP/PA Child Head Holder	9.75" x 11" x 5"
YFAQ	Child Head Immobilizer	6.75" x 11.5" x 5.25"
YFAM	AP/PA Adult Head Holder	14" x 15" x 6.75"
YFAP	Adult Head Immobilizer	9" x 15.25" x 7"

#### STEALTH BARIATRIC RECTANGLE/DECUBITUS

CAT.#	Base (W x L x H)	Top (W x L x H)
YCBM	10.5" x 14.5" x 3"	8" x 12"
YCBP	21.5" x 27.5" x 4"	18" x 24"

#### STEALTH BARIATRIC RECTANGLE/DECUBITUS

CAT.#	Base (W x L x H)	Top (W x L x H)
YBBM	10.5" x 14.5" x 3"	8" x 12"
YBBP	21.5" x 27.5" x 4"	18" x 24"

#### STEALTH BARIATRIC TORSO SPONGES

CAT.#	Description	Size (W x L x H)
YCAT	Bariatric Torso Bolster	18.5" x 16.5" x 7"

#### STEALTH BARIATRIC TORSO SPONGES

CAT.#	Description	Size (W x L x H)
YBAT	Bariatric Torso Bolster	18.5" x 16.5" x 7"

#### STEALTH BARIATRIC WEDGES

CAT.#	Degree	Top (W x L x H)
YCBA	45°	10" x 27.5" x 7"
YCEU	30°/60°/90°	10" x 29.5" x 6"

#### STEALTH BARIATRIC WEDGES

CAT.#	Degree	Top (W x L x H)
YBBA	45°	10" x 27.5" x 7"
YFEU	30°/60°/90°	10" x 29.5" x 6"



## Non-Stealth Positioning Sponges

Non-Stealth positioning sponges are available coated and non-coated. Non-flared sponges may show line artifacts when coating is applied. Dimensions listed as "Width x Length x Height."

**Stocked sponges are marked Blue!**

### COATED SPONGES

### NON-COATED SPONGES

#### NON-STEALTH RECTANGLES

CAT.#	Overall Size (W x L x H)
YCBR	4" x 6" x 1"
YCBS	4" x 6" x 1.5"
YCBT	4" x 6" x 2"
YCBV	6" x 6" x 2"
YCGG	8" x 18" x 1.5"
YCEO	14" x 21" x 1.5"
YCEM	15" x 24" x 2.5"
YCEH	5.5" x 20" x 4"

#### NON-STEALTH RECTANGLES

CAT.#	Overall Size (W x L x H)
YFBR	4" x 6" x 1"
YFBS	4" x 6" x 1.5"
YFBT	4" x 6" x 2"
YFBV	6" x 6" x 2"
YFGG	8" x 18" x 1.5"
YFEO	14" x 21" x 1.5"
YFEM	15" x 24" x 2.5"
YFEH	5.5" x 20" x 4"

#### NON-STEALTH WEDGES

CAT.#	Degree	Type	Size (W x L x H)
YCFD	45°	Spinal	7" x 21" x 7"
YCEG	65°		16" x 25" x 8.25"
YCCL	21°	Epidural	24" x 27" x 7"
YCDB	30°	Cardiac	28" x 27" x 16"
YCDA	45°	Cardiac	19" x 28" x 14"

#### NON-STEALTH WEDGES

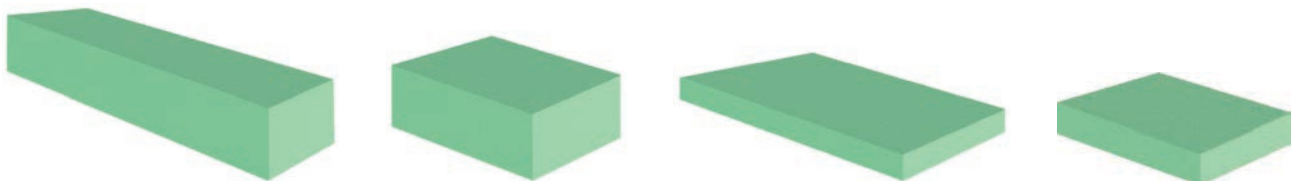
CAT.#	Degree	Type	Size (W x L x H)
YFFD	45°	Spinal	7" x 21" x 7"
YFEG	65°		16" x 25" x 8.25"
YFCL	21°	Epidural	24" x 27" x 7"
YFDB	30°	Cardiac	28" x 27" x 16"
YFDA	45°	Cardiac	19" x 28" x 14"

#### NON-STEALTH BARIATRIC WEDGES

CAT.#	Degree	Type	Size (W x L x H)
YCCG	45°		9" x 30" x 9"
YCHB		Spinal	7" x 24" x 7"

#### NON-STEALTH BARIATRIC WEDGES

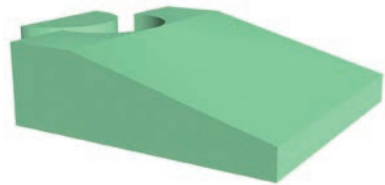
CAT.#	Degree	Type	Size (W x L x H)
YFCG	45°		9" x 30" x 9"
YFHB		Spinal	7" x 24" x 7"



## Non-Stealth Specialty Traditional Sponges

Specialty shaped sponges may show line artifacts when coating is applied.

**Stocked sponges are marked Blue!**



COATED

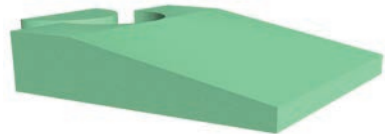
NON-COATED

#YCUZ

#YBUZ

**ENDO-ULTRASOUND WEDGE**

20 x 20 x 6



#YCEQ

#YFEQ

**PERINEAL WEDGE**

20 x 20 x 3



#YCAV

#YFAY

**ANGULAR BOLSTER**

14 x 22.5 x 7.25



## Non-Stealth Specialty Sponges

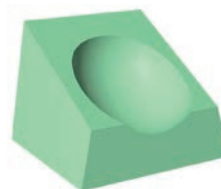
Specialty shaped sponges may show line artifacts when coating is applied.



#YCEZ |

**PHLEBOTOMY WEDGE**

5.5 x 25 x 5.5



#YCBW |

**CT HEADREST**

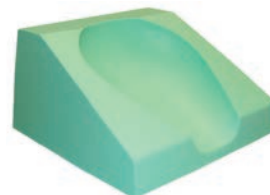
12.5 x 12 x 9.75  
(Neck Cradle 3.75" h)



#YCMG |

**CONTOURED TORSO PAD**

18.5 x 17 x 5



#YCEW |

**PHILIPS CT HEADREST**

12 x 12 x 6.5



#YCET |

**CT/CATH LAB HEADREST**

12.75 x 13 x 4.5  
(Neck Cradle 3" h)



#YCEV |

**CONVERTIBLE CT HEADREST**

14 x 13.5 x 6.75  
(2-Pc Flat and Convex Bases)

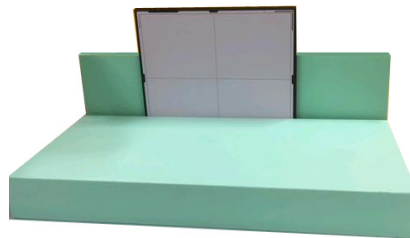
## Decubitus Block with Image Receptor Plate/Cassette Holder

Aides the technologist in positioning patients for cross-table lateral examinations. The decubitus pad ensures that the patient is elevated into a position above the plane of the imaging receptor for adequate imaging of the targeted body part. Provides excellent support and spine correction for laterals and decubitus views. Coated, firm foam.

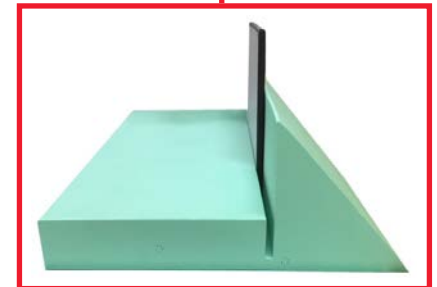
#YCFQ |

### Dimensions

Lower Half	Back	Channel
4" tall	11" tall	0.5" wide
36" long	36" long	36" long
16" deep	10" deep	3" deep



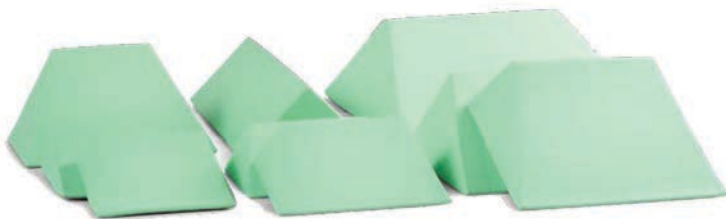
Convenient channel holds many types of image receptor plates and cassettes!



## Coated-Only Specialty Sponge Kits

### Specialty Coated CT Imaging Kit 4

#YSCT4 |



### INCLUDED SPONGES

QTY	INCLUDES	SPONGE TYPE
(1)	YCAJ	CT Knee Wedge
(1)	YCBC	45° Wedge
(1)	YCBF	27° Wedge
(1)	YCBG	21° Wedge
(1)	YCBH	16° Wedge Set
(1)	YCBJ	12° Wedge Set
(1)	YCFD	45° Spinal Wedge

**Stocked sponges are marked Blue!**

## Specialty Sponge Kits

	COATED	NON-COATED	INCLUDED SPONGES		
	<b>#YSCA</b>	<b>#YKCA</b>	<b>coated</b> YCBB YCAA YCAK YCBI	<b>CLINIC KIT A</b> <b>description</b> 45° Wedge Adult Obl Finger Block Circular Head Block 15° Wedge Set	<b>uncoated</b> YFBB YFAA YFAK YFBI
	<b>#YSPA</b>	<b>#YKPA</b>	<b>coated</b> YCAC YCAE YCAK YCAN YCAQ YCAX YCBT	<b>PEDIATRIC KIT</b> <b>description</b> Bilateral Child Obl Finger Block Pediatric Lateral Finger Block Circular Head Block AP/PA Child Head Holder Child Head Immobilizer Child Myelogram Block Rectangle	<b>uncoated</b> YFAC YFAE YFAK YFAN YFAQ YFAX YFBT
	<b>#YSCB</b>	<b>#YKCB</b>	<b>coated</b> YCAA YCAK YCBC YCBE YCBI YCBJ YCBL YCBD	<b>CLINIC KIT B</b> <b>description</b> Adult Obl Finger Block Circular Head Block 45° Wedge 34° Wedge Set 15° Wedge Set 12° Wedge Set Rectangle 45° Wedge	<b>uncoated</b> YFAA YFAK YFBC YFBE YFBI YFBJ YFBL YFBD

## General Sponge Kits

	COATED	NON-COATED	INCLUDED SPONGES		
	<b>#YSGP</b>	<b>#YKGP</b>	<b>coated</b> YCBD YCBI YCAK YCAA	<b>GENERAL KIT P</b> <b>description</b> 45° Spine Wedge 15° Wedge Circular Head Block Oblique Finger Block	<b>uncoated</b> YFBD YFBI YFAK YFAA
	<b>#YSGA</b>	<b>#YKGA</b>	<b>coated</b> YCAK YCBC YCBE YCBI YCBL	<b>GENERAL KIT A</b> <b>description</b> Circular Head Block 45° Wedge 34° Wedge Set 15° Wedge Set Rectangle	<b>uncoated</b> YFAK YFBC YFBE YFBI YFBL
	<b>#YSGB</b>	<b>#YKGB</b>	<b>coated</b> YCAA YCAK YCBC YCBE YCBI YCBJ YCBL	<b>GENERAL KIT B</b> <b>description</b> Adult Obl Finger Block Circular Head Block 45° Wedge 34° Wedge Set 15° Wedge Set 12° Wedge Set Rectangle	<b>uncoated</b> YFAA YFAK YFBC YFBE YFBI YFBJ YFBL

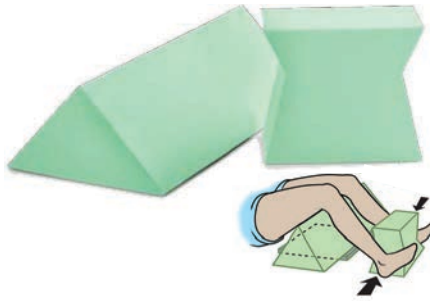
## Coated-Only Specialty Sponge Kits



COATED

INCLUDED SPONGES

### KNEE ARTHROPLASTY STRESS ASSEMBLY KIT



#YSAS

45° Wedge (9x24x9)  
Contoured Cube (11x9x6)  
Non-Stealth

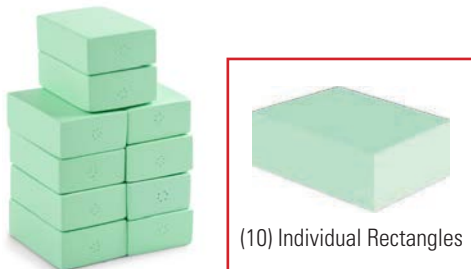
### ULTRASOUND SPECIALTY BREAST OR PARACENTESIS



#YSU8

YCBG - 21° Wedge  
YCFD - 45° Spinal Wedge  
YCBU - 30°-60°-90° Multi-Angle Wedge

### ULTRASONOGRAPHER SCANNING KIT 3



#YSRC

YCBT - (10) Individual Non-Stealth Rectangles

### GENERAL / PERINEAL KIT




#YSRD

YCAY - Angular Bolster  
YCEE - 45° Echocardiography Wedge  
YCUZ - Echo-Ultrasound Wedge

## General Sponge Kits



	COATED	NON-COATED	INCLUDED SPONGES		
	#YSGP	#YKGP	<b>coated</b> YCBD YCBI YCAK YCAA	<b>GENERAL KIT P</b> <b>description</b> 45° Spine Wedge 15° Wedge Circular Head Block Oblique Finger Block	<b>uncoated</b> YFBD YFBI YFAK YFAA
	#YSGA	#YKGA	<b>coated</b> YCAK YCBC YCBE YCBI YCBL	<b>GENERAL KIT A</b> <b>description</b> Circular Head Block 45° Wedge (2) 34° Wedges (2) 15° Wedges Rectangle	<b>uncoated</b> YFAK YFBC YFBE YFBI YFBL
	#YSGB	#YKGB	<b>coated</b> YCAA YCAK YCBC YCBE YCBI YCBJ YCBL	<b>GENERAL KIT B</b> <b>description</b> Adult Obl Finger Block Circular Head Block 45° Wedge 34° Wedge Set 15° Wedge Set 12° Wedge Set Rectangle	<b>uncoated</b> YFAA YFAK YFBC YFBE YFBI YFBJ YFBL
	#YSGD	#YKGD	<b>coated</b> YCAL YCAN YCAR YCBF YCBJ YCBL	<b>GENERAL KIT D</b> <b>description</b> Head & Neck Support AP/PA Child Head Holder Cervical Head Rest 27° Wedge 12° Wedge Set Rectangle	<b>uncoated</b> YFAL YFAN YFAR YFBF YFBJ YFBL
	#YSGX	#YKGX	<b>coated</b> YCAK YCBC YCBE YCBJ YCBL YCBN Pad-51	<b>GENERAL KIT X</b> <b>description</b> Circular Head Block 45° Wedge 34° Wedge Set 12° Wedge Set Rectangle Rectangle Standard Table Pad	<b>uncoated</b> YFAK YFBC YFBE YFBJ YFBL YFBN Pad-51
	#YSGE	#YKGE	<b>coated</b> YCAA YCAK YCAM YCBB YCBG YCBI YCBL YCBN YCBU	<b>GENERAL KIT E</b> <b>description</b> Adult Obl Finger Block Circular Head Block AP/PA Adult Head Holder 45° Wedge 21° Wedge 15° Wedge Set Rectangle Rectangle Multi-Angle Wedge	<b>uncoated</b> YFAA YFAK YFAM YFBB YFBG YFBI YFBL YFBN YFBU



### General Sponge Kits



	COATED	NON-COATED	INCLUDED SPONGES		
	#YSRA	#YKRA	<b>RECTANGLE KIT</b>		
			<b>coated</b> YCBQ YCBB YCBS YCBT	<b>description</b> (3) Rectangles (3) Rectangles (3) Rectangles (3) Rectangles	<b>uncoated</b> YFBQ YFBR YFBS YFBT
	#YSWA	#YKWA	<b>WEDGE KIT A</b>		
			<b>coated</b> YCBC YCBF YCBG YCBI	<b>description</b> 45° Wedge 27° Wedge 21° Wedge (2) 15° Wedges	<b>uncoated</b> YFBC YFBF YFBG YFBI
	#YSWB	#YKWB	<b>WEDGE KIT B</b>		
			<b>coated</b> YCBD YCBE YCBF YCBG	<b>description</b> 45° Spine Wedge (2) 34° Wedges 27° Wedge 21° Wedge	<b>uncoated</b> YFBD YFBE YFBF YFBG
	#YSOA	#YKOA	<b>ORTHO KIT A</b>		
			<b>coated</b> YCAA YCAM YCAR YCBD YCBL	<b>description</b> Adult Obl Finger Block AP/PA Adult Head Holder Cervical Head Rest 45° Spine Wedge Rectangle	<b>uncoated</b> YFAA YFAM YFAR YFBD YFBL
	#YSOB	#YKOB	<b>ORTHO KIT B</b>		
			<b>coated</b> YCAL YCAN YCAR YCBC YCBG YCBJ YCBL	<b>description</b> Head & Neck Support AP/PA Child Head Holder Cervical Head Rest 45° Wedge 21° Wedge (2) 12° Wedges Rectangle	<b>uncoated</b> YFAL YFAN YFAR YFBC YFBG YFBJ YFBL
	#YSOC	#YKOC	<b>ORTHO KIT C</b>		
			<b>coated</b> YCAA YCAD YCAF YCAH YCAK YCAL YCAR YCBU	<b>description</b> Adult Obl Finger Block Adult Lateral Finger Block Leg Immobilizer Knee Arthrogram Block Circular Head Block Head & Neck Support Cervical Head Rest Multi-Angle Wedge	<b>uncoated</b> YFAA YFAD YFAF YFAH YFAK YFAL YFAR YFBU

## Stocked Vinyl-Covered Positioning Bolsters

Reusable blocks, bolsters, and wedges are manufactured from firm, high-density urethane foam. Royal Blue outer covering is durable, heavy gauge, reinforced vinyl. Seams are sewn and tear resistant. Easy to clean Bolsters are **RADIOLUCENT**. Seams may show. Provides excellent support for a wide variety of imaging needs.

### STOCKED BOLSTERS

CAT.#	Description	Size (W x L x H)
YVF40	26° Knee Wedge	13" x 17" x 6"
YVFC	20° Wedge	24" x 18" x 6"
YVFD	45° Wedge	8" x 16" x 8"
YVFE	20° Incline Wedge	20" x 32" x 12"
YVFM	Knee Wedge	16" x 28.2" x 8.25"
YVFO	45° Spinal Wedge	7" x 21" x 7"
YVFU	30°/60°/90° Wedge	10" x 24" x 6"
YVJV	Comfort Pillow w/ Strap	16" x 25" x 8.25"
YVFZ	Endo-Ultrasound Wedge	20" x 22" x 6"
YVFG	Rectangle	8" x 12" x 16"
YVFH	Rectangle	12" x 14" x 3"
YVFI	Rectangle	24" x 15" x 3"
YVFJ	Rectangle	8" x 12" x 3"
YVFK	Rectangle	20" x 13" x 3"
YVFP	Decubitus Block	18" x 24" x 4"
YVFQ	DEXA Block	20" x 20" x 12"
YVFB	Semi-Cylinder	8" x 18" x 6"

**Stocked sponges are ready to ship!**



## Body Comfort Wedge Pillow

High density foam enclosed in a durable, heavy gauge, reinforced Royal Blue vinyl covering. Supports patient's head and shoulders when arms must be held above head. Dual hand grips reduce patient fatigue. Measures: 16" x 25" x 8.25"

#YVJV |



**Easy access grips reduces patient fatigue**

## Non-Stocked Vinyl-Covered Positioning Bolsters

### NON-STOCKED WEDGE BOLSTERS

CAT.#	Description	Size (W x L x H)
YVF155	13.5° Knee Wedge	10" x 10" x 3"
YVBH	16° Knee Wedge	8.5" x 11" x 3.5"
YVBG	21° Knee Wedge	12.25" x 14.25" x 4.5"
YVF156	21° Knee Wedge	10" x 10" x 4.6"
YVDB	30° Knee Wedge	28" x 27" x 16"
YVDC	30° Knee Wedge	9" x 30" x 9"
YVF126	30° Knee Wedge	23" x 11" x 6.5"
YVDA	45° Knee Wedge	14" x 28" x 14"
YVF129	45° Knee Wedge	5" x 15" x 5"
YVF178	45° Knee Wedge	9" x 30" x 9"

### NON-STOCKED SQUARE BOLSTERS

CAT.#	Description	Size (W x L x H)
YVF172	Square	18" x 18" x 4"
YVF42	Square	12" x 12" x 9"

### NON-STOCKED WEDGE BOLSTERS

CAT.#	Description	Size (W x L x H)
YVF161	Cylinder	4.5" x 18" x 4.5"
YVF167	Cylinder	4" x 48" x 4"
YVF53	Cylinder	4.5" x 12" x 4.5"
YVFA	Cylinder	8" x 24" x 8"
YVFS	Cylinder	6" x 17" x 6"
YVF119	Semi-Cylinder	12.75" x 22.75" x 8.75"
YVF164	Semi-Cylinder	24" x 36" x 16"
YVF180	Semi-Cylinder	6" x 12" x 4.5"
YVF46	Semi-Cylinder	14" x 20" x 5"

**Stocked sponges  
are marked Blue!**

### NON-STOCKED RECTANGLE BOLSTERS

CAT.#	Description	Size (W x L x H)
YVF110	Rectangle	6" x 12" x 1"
YVF109	Rectangle	6.5" x 9" x 1.5"
YVF137	Rectangle	5" x 11" x 1.5"
YVF133	Rectangle	4.25" x 34" x 2"
YVF160	Rectangle	6" x 8" x 2"
YVF73	Rectangle	14" x 24" x 2"
YVF75	Rectangle	4.5" x 22" x 2"
YVF78	Rectangle	17" x 25" x 2"
YVF79	Rectangle	7.5" x 8.5" x 2"
YVF93	Rectangle	24" x 36" x 2"
YVF170	Rectangle	12" x 15" x 2.5"
YVF60	Rectangle	14" x 23" x 2.5"
YVF74	Rectangle	13" x 22" x 2.5"
YVF105	Rectangle	14" x 18" x 3"
YVF136	Rectangle	5" x 11" x 3"
YVF177	Rectangle	12" x 4" x 3"
YVF107	Rectangle	20" x 24" x 4"
YVF108	Rectangle	20" x 7.5" x 4"
YVF120	Rectangle	18" x 36" x 4"
YVF134	Rectangle	5" x 30" x 4"
YVF57	Rectangle	3" x 14" x 17"
YVF179	Rectangle	4" x 10" x 4"
YVF182	Rectangle	9.5" x 9.5" x 4"
YVF184	Rectangle	10" x 20" x 4"
YVF102	Rectangle	8" x 10" x 6"
YVF132	Rectangle	12" x 18" x 6"
YVF175	Rectangle	14" x 14" x 6"
YVF186	Rectangle	8" x 20" x 6"
YVF188	Rectangle	10" x 20" x 6"
YVF169	Rectangle	6.5" x 21" x 6.5"
YVFT	Rectangle	16" x 12" x 7"
YVF77	Rectangle	6" x 18" x 7.5"
YVF56	Rectangle	2" x 8" x 10"
YVF99	Rectangle	14" x 17" x 10"
YVF187	Rectangle	16" x 16" x 12"
YVF43	Rectangle	12" x 12" x 12"
YVF84	Rectangle	14" x 17" x 12"
YVFW	Rectangle	16" x 18" x 12"
YVF176	Rectangle	14.5" x 18" x 13"

## Vinyl-Covered Positioning Bolster Kits

Reusable blocks, bolsters, and wedges are manufactured from firm, high-density urethane foam. Royal Blue outer covering is durable, heavy gauge, reinforced vinyl. Seams are sewn and tear resistant. Easy to clean Bolsters are RADIOLUCENT. Seams may show. Provides excellent support for a wide variety of imaging needs.

### GENERAL KIT 1 | YSU1

CAT.#	Description	Size (W x L x H)	QTY
YVFB	Semi-Cylinder	8" x 18" x 6"	1
YVFG	Rectangle	8" x 12" x 16"	2
YVFJ	Rectangle	8" x 12" x 3"	1

### GENERAL KIT 2 | YSU2

CAT.#	Description	Size (W x L x H)	QTY
YVFG	Rectangle	8" x 12" x 16"	2
YVFJ	Rectangle	8" x 12" x 3"	1

### GENERAL KIT 3 | YSU3

CAT.#	Description	Size (W x L x H)	QTY
YVFB	Semi-Cylinder	8" x 18" x 6"	1
YVFD	45° Wedge	8" x 16" x 8"	1
YVFG	Rectangle	8" x 12" x 16"	1

### GENERAL KIT 4 | YSU4

CAT.#	Description	Size (W x L x H)	QTY
YVFA	Cylinder	8" x 24" x 8"	1
YVFB	Semi-Cylinder	8" x 18" x 6"	1
YVFC	20° Wedge	24" x 18" x 6"	1
YVFD	45° Wedge	8" x 16" x 8"	1
YVFG	Rectangle	8" x 12" x 16"	1
YVFH	Rectangle	12" x 14" x 3"	1
YVFJ	Rectangle	8" x 12" x 3"	1
YVFK	Rectangle	20" x 13" x 3"	1

### GENERAL KIT 5 | YSU5

CAT.#	Description	Size (W x L x H)	QTY
YVFB	Semi-Cylinder	8" x 18" x 6"	1
YVFC	20° Wedge	24" x 18" x 6"	1
YVFD	45° Wedge	8" x 16" x 8"	1
YVFJ	Rectangle	8" x 12" x 3"	1
YVFO	45° Spinal Wedge	7" x 21" x 7"	1

### GENERAL KIT 6 | YSU6

CAT.#	Description	Size (W x L x H)	QTY
YVFJ	Rectangle	8" x 12" x 3"	1
YVFK	Rectangle	20" x 13" x 3"	1
YVFO	45° Spinal Wedge	7" x 21" x 7"	1
YVFM	Knee Wedge	16" x 28.2" x 8"	1

**Don't see the kit you're looking for? We are happy to help build your perfect solution!**  
**Contact us today**



## Vinyl-Covered Specialty Bolsters

### KNEE WEDGE

#YVFM |

16" x 25" x 8.25"



### ENDO ULTRASOUND VINYL WEDGE

#YVFZ |

20" x 23" x 6"

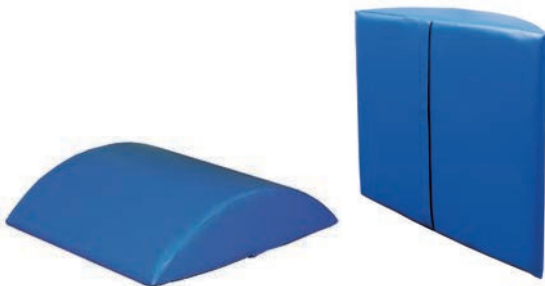


### WHEELCHAIR PATIENT POSITIONING BOLSTER

This patient positioning bolster is perfect for propping up cassettes behind patients in wheelchairs. Sponge is curved to fit in most wheelchairs. Covered with heavy duty vinyl royal blue vinyl.

#YVWS |

18" x 20" x 5"

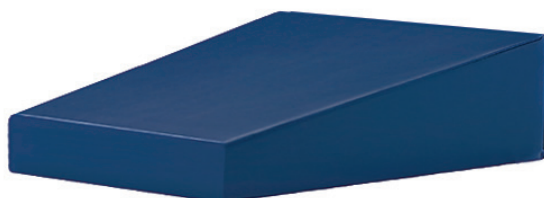


### TAPERED STRETCHER/WHEELCHAIR BOLSTER

This patient positioning bolster is perfect for stretcher and wheelchair imaging and mobile x-ray. Covered with heavy duty vinyl royal blue vinyl.

#YVWA |

14"(W) x 24.5"(L) x 1.5"-5.5"(H)



## Vinyl-Covered Specialty Bolster Kits

### DEXA POSITIONING KIT

The large bolster aids in positioning the AP lumbar spine. The small head bolster and 15° "A" frame splint lock the feet into position to abduct both legs to hold full extension at the knees and hips.

#TI-SET			
CAT#	Description	Size (W x L x H)	QTY
YVFJ	Head Bolster	8" x 12" x 3"	1
YVFO	DEXA Leg Bolster	20" x 20" x 12"	1
Description		Size (W x T x D)	QTY
"A" Frame 15° Locking Foot Splint		7.5" x 12" x 8"	1



### LATERAL DECUBITUS POSITIONER KIT

This KIT includes a 90° support with hook and loop stability straps and a YVFK decubitus bolster to aid in cross lateral examinations. The pad assures the patient is elevated into the imaging field.

#TBC-2214 |

Pad Size: 20"(W) x 13"(L) x 3"(H)







ADMINISTRATION/MANUFACTURING

7117 Centennial Blvd. Nashville, TN 37209

Orders can be placed online or sent to [orders@techno-aide.com](mailto:orders@techno-aide.com)

For official Quotes: [quotes@techno-aide.com](mailto:quotes@techno-aide.com)

Any questions can be directed to [customerservice@techno-aide.com](mailto:customerservice@techno-aide.com)

P: 800.251.2629 or 615.350.7030

F: 800.554.6275 or 615.350.7879

[techno-aide.com](http://techno-aide.com)