



ULTRARAY
MEDICAL



RADIATION PROTECTION APPAREL
& ACCESSORIES



A LEADER IN RADIATION PROTECTION SINCE 1985.

Ultraray Group Inc. is an ISO 9001:2015 Certified Manufacturer.



Ultraray Group Inc. is a Class 1 Health Canada Certified Manufacturer and Distributor operating under our Health Canada Medical Establishment License 2312.

Ultraray Group Inc. manufactures Canadian made products using the latest in technology while maintaining the highest safety standards.

Our products are manufactured using strict quality control procedures in accordance with Health Canada Medical Devices Regulations.

We welcome your ideas and suggestions as they result in the ongoing improvement & development of our products.

SMARTID



SmartID is a revolutionary web-based inventory management system for radiation protection apparel. The system allows hospital staff members to access details on each radiation protection product in their inventory directly from their smartphone, tablet, or computer.

Each item is tagged with a unique QR code that can be scanned with your smartphone (or any device with a QR reader). Once the QR code has been scanned, staff members will have access to product details, a virtual image of the product and complete inspection reports for that product. Its that simple, no special software or equipment is required. Labels are provided at no cost and are located in a position that does not come into contact with your body.

TABLE OF CONTENTS

| | |
|--|-------|
| GENERAL CATALOGUE INFORMATION POLICIES . PROGRAMS . LEAD PROTECTION OPTIONS | 2-3 |
| APRONS & ACCESSORIES APRONS . APRON OPTIONS . APRON ACCESSORIES . GLOVES | 4-32 |
| PROTECTIVE EYEWEAR RADIATION AND LASER PROTECTION LEADED GLASSES | 33-39 |
| PATIENT APRONS & ACCESSORIES PATIENT APRONS . PEDIATRIC APRONS . X-RAY ACCESSORIES . TABLE PADS . SIGNS | 40-49 |
| APRON RACKS WALL-MOUNTED & MOBILE APRON STORAGE RACKS . HANGERS . TABLE SCATTER SHIELD | 50-55 |
| BARRIERS & SHIELDS LEAD GLASS & CURTAIN BARRIERS . TABLE SHIELDS . LEAD VINYL SHEETS . BLANKETS | 56-58 |
| CONTROL BOOTHS MODULAR & CUSTOM MANUFACTURED | 59-60 |

Innovation, Reliability and Service

7 DAY SATISFACTION POLICY

Please contact us if you are not satisfied with your order and we will make every attempt to correct the problem. This policy is applicable to all standard products. Made-to-measure or custom made orders are subject to review.

30 DAY RETURN POLICY

Authorized returns are subject to a 25% restocking fee. Goods must be returned in their original condition and packaging. The end-user is responsible for shipping charges. Please contact us prior to any returns for a Return Merchandise Authorization Number. Goods returned without an RMA# will be refused.

LIMITED WARRANTY POLICY

Our manufactured products come with a limited 2 year warranty against defects in workmanship and/or materials if accompanied by all their original manufacturing labels. Our distribution products are subject to their manufacturer's warranty policy. The end-user is responsible for warranty return shipping charges. Damage caused by misuse or neglect will void this warranty. Please contact us prior to any returns for a Return Merchandise Authorization Number. Goods returned without an RMA# will be refused.

THE ENVIRONMENT

Many claims have been made regarding what constitutes an environmentally friendly apron.

Our Policy

An apron made with any attenuating product must be properly disposed of at the end of its cycle.

Our Assurance

Any Ultraray product returned to us, regardless of its core material, will be properly discarded.

Our Plan

Ultraray has implemented a responsible environmental policy within our administrative and manufacturing facilities by reducing, recycling or reusing all materials consumed in the process of conducting our business.

RECYCLING PROGRAM

We will properly recycle a previously owned Ultraray apron at no-charge for every new apron purchased. For non-Ultraray aprons a recycling fee will apply. A bulk recycling program is available.

THE ULTRARAY APRON Protection with Style and Comfort

YOUR CHOICE OF LEAD OR COMPOSITE CORE MATERIALS IN VARIOUS COMBINATIONS OF LEAD-EQUIVALENCIES.

TrueLead



Certified .5mm LE @ 150KVP

TrueLead is composed of 100% lead core. It offers the highest level of protection, with a lead-equivalency of 0.5mm @ 150KVP. It is a good economical choice that provides excellent protection.

UltraXTLite



Certified .5mm LE @ 130KVP

UltraXTLite is composed of a composite core. It is the best combination of weight, protection and economy available on the market. It offers a highly acceptable level of protection, with a lead-equivalency of 0.5mm @ 130KVP, at considerably less weight than TrueLead.

CirrusEcoLite



Certified .5mm LE @ 100KVP

CirrusEcoLite is composed of a blend of lightweight materials and does not contain lead. It is the lightest material on the market today with a lead-equivalency of 0.5mm @ 100KVP. It is recommended you verify with your Radiation Safety Officer that this level of protection is acceptable at your facility.

ADJUSTABLE FIT FRONTAL with VELCRO® Closure

- Easy on and off convenience.
- Adjustable VELCRO® arms provide excellent weight distribution and comfort.
- Built-in shoulder pads offer additional comfort.
- Adjustable shoulder strap prevents the apron from slipping.
- Optional elastic back provides the ultimate in support and fit.
- Optional no-charge pocket.
- Available in XS-XXL and Made-to-Measure.



Standard Back



Optional Elastic Back

| Code | Description |
|---------|----------------------------------|
| BA1 | TrueLead™ |
| XBA1 | Ultra XT Lite™ |
| CBA1 | Cirrus Eco Lite™ |
| BA1-EB | TrueLead™ with Elastic Back |
| XBA1-EB | Ultra XT Lite™ with Elastic Back |

| FRONTAL APRON SIZES | | | |
|---------------------|-----------------------------|----------------|----------------|
| SIZE | Actual Apron Width x Length | Shoulder Width | Max. Chest/Hip |
| X-Small | 20" X 34" | 14" | 34" |
| Small | 22" X 35" | 14½" | 38" |
| Medium | 24" X 37" | 16" | 42" |
| Large | 24" X 39" | 18½" | 44" |
| X-Large | 26" X 41" | 20½" | 46" |

Lead Options: p.3
Apron Options: p.27

Fabric/Embroidery: p.22-26
Apron Accessories: p.28-30

ADJUSTABLE FIT FRONTAL

with Belt and Buckle

- Easy on and off convenience.
- Adjustable heavy-duty 2" web belt with quick-release buckle closure.
- Built-in shoulder pads offer additional comfort.
- Adjustable shoulder strap prevents the apron from slipping.
- Optional elastic back provides the ultimate in support and fit.
- Optional no-charge pocket.
- Available in XS-XXL and Made-to-Measure.



Standard Back

Optional Elastic Back

| Code | Description |
|---------|----------------------------------|
| BA2 | TrueLead™ |
| XBA2 | Ultra XT Lite™ |
| CBA2 | Cirrus Eco Lite™ |
| BA2-EB | TrueLead™ with Elastic Back |
| XBA2-EB | Ultra XT Lite™ with Elastic Back |

| FRONTAL APRON SIZES | | | |
|---------------------|-----------------------------|----------------|----------------|
| SIZE | Actual Apron Width x Length | Shoulder Width | Max. Chest/Hip |
| X-Small | 20" X 34" | 14" | 34" |
| Small | 22" X 35" | 14½" | 38" |
| Medium | 24" X 37" | 16" | 42" |
| Large | 24" X 39" | 18½" | 44" |
| X-Large | 26" X 41" | 20½" | 46" |



Lead Options: p.3
Apron Options: p.27

Fabric/Embroidery: p.22-26
Apron Accessories: p.28-30



BACK SAVER FRONTAL

- Ideal for long procedures.
- Easy on and off convenience.
- Adjustable UltraLastik Belt or SuperBelt provides excellent weight distribution and comfort by transferring weight from shoulders to hips. Just shrug your shoulders and adjust the belly to a comfortable position.
- Built-in shoulder pads offer additional comfort.
- Adjustable shoulder strap prevents the apron from slipping.
- Optional no-charge pocket.
- Available in XS-XXL and Made-to-Measure.

| Code | Description |
|---------|--|
| BA3-UL | TrueLead™ with UltraLastik Belt |
| XBA3-UL | Ultra XT Lite™ with UltraLastik Belt |
| CBA3-UL | Cirrus Eco Lite™ with UltraLastik Belt |
| BA3-SB | TrueLead™ with SuperBelt |
| XBA3-SB | Ultra XT Lite™ with SuperBelt |

| FRONTAL APRON SIZES | | | |
|---------------------|-----------------------------|----------------|----------------|
| SIZE | Actual Apron Width x Length | Shoulder Width | Max. Chest/Hip |
| X-Small | 20" X 34" | 14" | 34" |
| Small | 22" X 35" | 14½" | 38" |
| Medium | 24" X 37" | 16" | 42" |
| Large | 24" X 39" | 18½" | 44" |
| X-Large | 26" X 41" | 20½" | 46" |



UltraLastik



SuperBelt

Lead Options: p.3
Apron Options: p.27

Fabric/Embroidery: p.22-26
Apron Accessories: p.28-30

O.R. DROP FRONTAL

with Side Release

- Designed to release quickly under surgical gown without compromising the sterile field.
- Adjustable quick-release straps cross the back and VELCRO® securely to the front for a snug fit.
- Built-in shoulder pads offer additional comfort.
- Optional no-charge pocket.
- Available in XS-XXL and Made-to-Measure.



| Code | Description |
|------|------------------|
| DA1 | TrueLead™ |
| XDA1 | Ultra XT Lite™ |
| CDA1 | Cirrus Eco Lite™ |

| FRONTAL APRON SIZES | | | |
|---------------------|-----------------------------|----------------|----------------|
| SIZE | Actual Apron Width x Length | Shoulder Width | Max. Chest/Hip |
| X-Small | 20" X 34" | 14" | 34" |
| Small | 22" X 35" | 14½" | 38" |
| Medium | 24" X 37" | 16" | 42" |
| Large | 24" X 39" | 18½" | 44" |
| X-Large | 26" X 41" | 20½" | 46" |
| XX-Large | 28" X 43" | 21½" | 50" |

Lead Options: p.3
 Apron Options: p.27
 Fabric/Embroidery: p.22-26
 Apron Accessories: p.28-30

O.R. DROP FRONTAL

with Top Release

- Designed to release quickly under surgical gown without compromising the sterile field.
- Adjustable quick-release VELCRO® shoulder tabs.
- Built-in shoulder pads offer additional comfort.
- Optional no-charge pocket.
- Available in XS-XXL and Made-to-Measure.



Quick-release back

| Code | Description |
|------|------------------|
| DA2 | TrueLead™ |
| XDA2 | Ultra XT Lite™ |
| CDA2 | Cirrus Eco Lite™ |

| FRONTAL APRON SIZES | | | |
|---------------------|-----------------------------|----------------|----------------|
| SIZE | Actual Apron Width x Length | Shoulder Width | Max. Chest/Hip |
| X-Small | 20" X 34" | 14" | 34" |
| Small | 22" X 35" | 14½" | 38" |
| Medium | 24" X 37" | 16" | 42" |
| Large | 24" X 39" | 18½" | 44" |
| X-Large | 26" X 41" | 20½" | 46" |
| XX-Large | 28" X 43" | 21½" | 50" |

Lead Options: p.3
Apron Options: p.27

Fabric/Embroidery: p.22-26
Apron Accessories: p.28-30

O.R. DROP FRONTAL

with Top Release and Adjustable Flex Side Release

- Designed to release quickly under surgical gown without compromising the sterile field.
- Adjustable quick-release VELCRO® shoulder tabs.
- Adjustable VELCRO® arms with elastic back provide excellent weight distribution and comfort.
- Built-in shoulder pads offer additional comfort.
- Optional no-charge pocket.
- Available in XS-XXL and Made-to-Measure.



Elastic Back



| Code | Description |
|---------|------------------|
| DA3-EB | TrueLead™ |
| XDA3-EB | Ultra XT Lite™ |
| CDA3-EB | Cirrus Eco Lite™ |

| FRONTAL APRON SIZES | | | |
|---------------------|-----------------------------|----------------|----------------|
| SIZE | Actual Apron Width x Length | Shoulder Width | Max. Chest/Hip |
| X-Small | 20" X 34" | 14" | 34" |
| Small | 22" X 35" | 14½" | 38" |
| Medium | 24" X 37" | 16" | 42" |
| Large | 24" X 39" | 18½" | 44" |
| X-Large | 26" X 41" | 20½" | 46" |

Lead Options: p.3 Fabric/Embroidery: p.22-26
 Apron Options: p.27 Apron Accessories: p.28-30

TRI-FLAP UROLOGY FRONTAL



- Urology specific tri-flap design.
- Criss-cross back.
- Adjustable heavy-duty 2" web belt with quick-release buckle closure.
- Built-in shoulder pads offer additional comfort.
- Adjustable shoulder strap prevents the apron from slipping.
- Optional elastic back provides the ultimate in support and fit.
- Optional no-charge pocket.
- Available in XS-XXL and Made-to-Measure.



Standard Back



Optional Elastic Back

| Code | Description |
|---------|------------------------------------|
| URO | TrueLead™ |
| XURO | Ultra XT Lite™ |
| CURO | Cirrus Eco Lite™ |
| URO-EB | TrueLead™ with Elastic Back |
| XURO-EB | Ultra XT Lite™ with Elastic Back |
| CURO-EB | Cirrus Eco Lite™ with Elastic Back |

| FRONTAL APRON SIZES | | | |
|---------------------|-----------------------------|----------------|----------------|
| SIZE | Actual Apron Width x Length | Shoulder Width | Max. Chest/Hip |
| X-Small | 20" X 34" | 14" | 34" |
| Small | 22" X 35" | 14½" | 38" |
| Medium | 24" X 37" | 16" | 42" |
| Large | 24" X 39" | 18½" | 44" |
| X-Large | 26" X 41" | 20½" | 46" |
| XX-Large | 28" X 43" | 21½" | 50" |

Lead Options: p.3
Apron Options: p.27

Fabric/Embroidery: p.22-26
Apron Accessories: p.28-30

PARTIAL OVERLAP

Unisex Vest and Skirt

- Full protection in each panel.
- Adjustable center overlap design.
- Specified protection in each panel regardless of variations in overlap fit.
- Ideal for multiple users.
- Built-in shoulder pads offer additional comfort.
- Available in Mix & Match sizes XS-XL and Made-to-Measure.

| Code | Description |
|------|------------------|
| SP2 | TrueLead™ |
| XSP2 | Ultra XT Lite™ |
| CSP2 | Cirrus Eco Lite™ |

| VEST SIZES - Unisex | | | |
|---------------------|------------|-----------|--------|
| SIZE | Chest Size | Shoulders | Length |
| X-Small | 30-33" | 14½" | 21" |
| Small | 34-37" | 15" | 21" |
| Medium | 38-41" | 16" | 22" |
| Large | 42-45" | 18" | 24" |
| X-Large | 46-49" | 20" | 25" |

| SKIRT SIZES - Unisex | | | |
|----------------------|------------|----------|--------|
| SIZE | Waist Size | Hip Size | Length |
| X-Small | 24-27" | 33-36" | 19½" |
| Small | 28-31" | 37-40" | 21" |
| Medium | 32-35" | 41-44" | 22" |
| Large | 36-39" | 45-46" | 23" |



Lead Options: p.3
Apron Options: p.27

Fabric/Embroidery: p.22-26
Apron Accessories: p.28-30

MIX & MATCH

Full Overlap Vest & Skirt with
VELCRO® Closure



FRONT VIEW

VEST - Male or Female

- Front VELCRO® closures assure a comfortable and secure fit.
- Inside buckle allows for easy VELCRO® alignment and prevents inner panel from sagging.
- Built-in shoulder pads offer additional comfort.
- Optional no-charge pocket.
- Optional no-charge outside buckles provide additional support for outside panel.
- Available in Mix&Match Male and Female sizes: XS-XXXL and Made-to-Measure.

SKIRT - Unisex

- Front VELCRO® closure and a heavy-duty 2" web belt and buckle assure a comfortable and secure fit.
- Hanging loops for safe storing.
- Optional pocket.
- Available in Mix & Match Unisex sizes: XS-XXXL and Made-to-Measure.

Lead Options: p.3
Apron Options: p.27

Fabric/Embroidery: p.22-26
Apron Accessories: p.28-30

| Code (Vest Male) | Code (Vest Female) | Description |
|------------------|--------------------|-------------------------------|
| SP2FWVM | SP2FWVF | TrueLead™ |
| XSP2FWVM | XSP2FWVF | Ultra XT Lite™ |
| CSP2FWVM | CSP2FWVF | Cirrus Eco Lite™ |
| SP2FWVM-B | SP2FWVF-B | TrueLead™ with Buckles |
| XSP2FWVM-B | XSP2FWVF-B | Ultra XT Lite™ with Buckles |
| CSP2FWVM-B | CSP2FWVF-B | Cirrus Eco Lite™ with Buckles |

| Code (Skirt) | Description |
|--------------|------------------|
| SP2FWS | TrueLead™ |
| XSP2FWS | Ultra XT Lite™ |
| CSP2FWS | Cirrus Eco Lite™ |

Sizing Chart

Please refer to page 22 for measurement guide.

| VEST SIZES - Male | | | VEST SIZES - Female | |
|-------------------|------------|--------|---------------------|--------|
| Size | Chest Size | Length | Chest Size | Length |
| X-Small | 35-36" | 23½" | 33-34" | 21" |
| Small | 37-38" | 24½" | 35-36" | 21½" |
| Medium | 39-40" | 25" | 37-38" | 22" |
| Large | 41-42" | 25½" | 39-40" | 22½" |
| X-Large | 43-44" | 26" | 41-42" | 23" |
| XX-Large | 45-46" | 26½" | 43-44" | 23½" |
| XXX-Large | 47-48" | 27" | 45-46" | 24" |

| SKIRT SIZES - Unisex | | | |
|----------------------|------------|----------|--------|
| Size | Waist Size | Hip Size | Length |
| X-Small | 26-27" | 33-34" | 18" |
| Small | 28-29" | 35-36" | 19" |
| Medium-1 | 30-31" | 37-38" | 21" |
| Medium-2 | 32-33" | 39-40" | 22" |
| Large-1 | 34-35" | 41-42" | 23" |
| Large-2 | 36-37" | 43-44" | 23" |
| X-Large | 38-39" | 45-46" | 23" |
| XX-Large | 40-41" | 47-48" | 23" |
| XXX-Large | 42-43" | 49-50" | 24" |



REAR VIEW

Lead Options: p.3
Apron Options: p.27

Fabric/Embroidery: p.22-26
Apron Accessories: p.28-30

MIX & MATCH

Reverse Vest & Full Overlap Skirt with VELCRO® Closure



FRONT VIEW

REVERSE VEST - Male or Female

- Reverse style offers maximum adjustment, comfort and support.
- Adjustable arms criss-cross the back of the apron and VELCRO® securely in front.
- Elastic back offers greater adjustment and provides comfort and support.
- Front closing adjustable shoulder flap.
- Built-in shoulder pads offer additional comfort.
- Optional no-charge pocket.
- Available in Male and Female sizes XS-XXXL and Made-to-Measure.

SKIRT - Unisex

- Front VELCRO® closure and a heavy-duty 2" web belt and buckle assure a comfortable and secure fit.
- Hanging loops.
- Optional pocket.
- Available in Mix & Match Unisex sizes: XS-XXXL and Made-to-Measure.

Lead Options: p.3
Apron Options: p.27

Fabric/Embroidery: p.22-26
Apron Accessories: p.28-30

| Code (Vest Male) | Code (Vest Female) | Description |
|------------------|--------------------|------------------|
| MODM | MODF | TrueLead™ |
| XMODM | XMODF | Ultra XT Lite™ |
| CMODM | CMODF | Cirrus Eco Lite™ |

| Code (Skirt) | |
|--------------|------------------|
| SP2FWS | TrueLead™ |
| XSP2FWS | Ultra XT Lite™ |
| CSP2FWS | Cirrus Eco Lite™ |

Sizing Chart

Please refer to page 22 for measurement guide.

| VEST SIZES - MALE | | | VEST SIZES - FEMALE | |
|-------------------|------------|--------|---------------------|--------|
| Size | Chest Size | Length | Chest Size | Length |
| X-Small | 35-36" | 23½" | 33-34" | 21" |
| Small | 37-38" | 24½" | 35-36" | 21½" |
| Medium | 39-40" | 25" | 37-38" | 22" |
| Large | 41-42" | 25½" | 39-40" | 22½" |
| X-Large | 43-44" | 26" | 41-42" | 23" |
| XX-Large | 45-46" | 26½" | 43-44" | 23½" |
| XXX-Large | 47-48" | 27" | 45-46" | 24" |

| SKIRT SIZES - Unisex | | | |
|----------------------|------------|----------|--------|
| SIZE | Waist Size | Hip Size | Length |
| X-Small | 26-27" | 33-34" | 18" |
| Small | 28-29" | 35-36" | 19" |
| Medium-1 | 30-31" | 37-38" | 21" |
| Medium-2 | 32-33" | 39-40" | 22" |
| Large-1 | 34-35" | 41-42" | 23" |
| Large-2 | 36-37" | 43-44" | 23" |
| X-Large | 38-39" | 45-46" | 23" |
| XX-Large | 40-41" | 47-48" | 23" |
| XXX-Large | 42-43" | 49-50" | 24" |



REAR VIEW

Lead Options: p.3
Apron Options: p.27

Fabric/Embroidery: p.22-26
Apron Accessories: p.28-30



PARTIAL OVERLAP COAT

with Three Belt Options

- Full protection in each panel.
- Adjustable center overlap design.
- Specified protection in each panel regardless of variations in overlap fit.
- Ideal for multiple users.
- Built-in shoulder pads offer additional comfort.
- Three belt options: 2" Web Belt, UltraLastik and SuperBelt.
- Available in XS-XL and Made-to-Measure.

| Code | Description |
|---------|--|
| SP1 | TrueLead™ with 2" Web Belt |
| XSP1 | Ultra XT Lite™ with 2" Web Belt |
| CSP1 | Cirrus Eco Lite™ with 2" Web Belt |
| SP1-UL | TrueLead™ with UltraLastik Belt |
| XSP1-UL | Ultra XT Lite™ with UltraLastik Belt |
| CSP1-UL | Cirrus Eco Lite™ with UltraLastik Belt |
| SP1-SB | TrueLead™ with SuperBelt |
| XSP1-SB | Ultra XT Lite™ with SuperBelt |
| CSP1-SB | Cirrus Eco Lite™ with SuperBelt |



UL Back



SB Back

| PARTIAL OVERLAP COAT SIZES | | | | | |
|----------------------------|--------|-----------|--------|--------------|-------------|
| Size | Chest | Shoulders | Hip | Front Length | Rear Length |
| X-Small | 29-32" | 13" | 34-37" | 34" | 32" |
| Small | 33-36" | 13½" | 38-41" | 36" | 34" |
| Medium | 37-40" | 15½" | 42-45" | 38" | 36" |
| Large | 41-44" | 17½" | 46-49" | 40" | 38" |
| X-Large | 45-48" | 19½" | 50-53" | 42" | 40" |

Lead Options: p.3
Apron Options: p.27

Fabric/Embroidery: p.22-26
Apron Accessories: p.28-30

FULL OVERLAP COAT

with Two Belt Options

- Full protection in a lighter apron. Lead weight is divided between the two fully overlapping front panels.
- Adjustable frontal VELCRO® closures assure a comfortable and secure fit.
- Inside buckle allows for easy VELCRO® alignment and prevents inner panel from sagging.
- Built-in shoulder pads offer additional comfort.
- Optional no-charge chest pocket.
- Optional no-charge outside buckles provide additional support for outside panel.
- Ultralastik and SuperBelt. Two back support belt options move weight from shoulders to hips.
- Available in Unisex XS-XXL and Made-to-Measure.



| Code | Code (with buckles) | Description |
|-----------|------------------------|--|
| SP1FW-UL | SP1FW-UL-B | TrueLead™ with UltraLastik Belt |
| XSP1FW-UL | XSP1FW-UL-B | Ultra XT Lite™ with UltraLastik Belt |
| CSP1FW-UL | CSP1FW-UL-B | Cirrus Eco Lite™ with UltraLastik Belt |
| SP1FW-SB | SP1FW-SB-B | TrueLead™ with SuperBelt |
| XSP1FW-SB | XSP1FW-SB-B | Ultra XT Lite™ with SuperBelt |
| CSP1FW-SB | CSP1FW-SB-B | Cirrus Eco Lite™ with SuperBelt |

| FULL OVERLAP COAT SIZES | | | | | |
|-------------------------|--------|-----|-----------|--------------|-------------|
| Size | Chest | Hip | Shoulders | Front Length | Rear Length |
| X-Small | 33-35" | 38" | 14½" | 35" | 33½" |
| Small | 36-38" | 40" | 15½" | 36½" | 35" |
| Medium-1 | 39-41" | 43" | 16" | 38½" | 37" |
| Medium-2 | 42-44" | 46" | 16" | 38½" | 37" |
| Large | 45-46" | 49" | 17" | 41" | 39" |
| X-Large | 47-48" | 52" | 17" | 42½" | 41" |
| XX-Large | 49-50" | 54" | 17" | 44" | 42" |

Lead Options: p.3
 Apron Options: p.27
 Fabric/Embroidery: p.22-26
 Apron Accessories: p.28-30

STRETCH BACK

Reverse Coat

- Reverse style offers maximum adjustment, comfort and support.
- Adjustable arms criss-cross the back of the apron and VELCRO® securely in front.
- Elastic back offers greater adjustment and provides comfort and support.
- Front closing adjustable shoulder flap.
- Built-in shoulder pads offer additional comfort.
- Optional no-charge pocket.
- Available in Unisex sizes S-XL and Made-to-Measure.



Built-in Elastics Back

| Code | | Description |
|------|------------------|-------------|
| SP4 | TrueLead™ | |
| XSP4 | Ultra XT Lite™ | |
| CSP4 | Cirrus Eco Lite™ | |

| STRETCH BACK REVERSE COAT SIZES | | | | | |
|---------------------------------|--------|--------|--------|--------------|-------------|
| Size | Chest | Waist | Hip | Front Length | Rear Length |
| Small | 33-36" | 34-37" | 35-38" | 36" | 34" |
| Medium | 37-40" | 38-41" | 39-42" | 38" | 36" |
| Large | 41-44" | 42-45" | 43-46" | 40" | 38" |
| X-Large | 45-48" | 46-50" | 47-50" | 42" | 40" |

Lead Options: p.3
Apron Options: p.27

Fabric/Embroidery: p.22-26
Apron Accessories: p.28-30

DIAMOND BACK COAT

- Reverse entry coat with rear closure.
- Belt pulls through side and fastens in the front for easy adjustment.
- Accommodates a wide range of sizes due to pull through belt design.
- No VELCRO® to line up and attach.
- Adjustable shoulder strap.
- Built-in shoulder pads offer additional comfort.
- Optional no-charge pocket.
- Available in S-XL and Made-to-Measure.



Pull-Through Back



| Code | Description |
|------|------------------|
| SP5 | TrueLead™ |
| XSP5 | Ultra XT Lite™ |
| CSP5 | Cirrus Eco Lite™ |

| DIAMOND BACK COAT SIZES | | | | | |
|-------------------------|--------|--------|--------|--------------|-------------|
| Size | Chest | Waist | Hip | Front Length | Rear Length |
| Small | 33-36" | 34-37" | 35-38" | 36" | 34" |
| Medium | 37-40" | 38-41" | 39-42" | 38" | 36" |
| Large | 41-44" | 42-45" | 43-46" | 40" | 38" |
| X-Large | 45-48" | 46-50" | 47-50" | 42" | 40" |

Lead Options: p.3
Apron Options: p.27

Fabric/Embroidery: p.22-26
Apron Accessories: p.28-30

COMFORT WRAP COAT

- Wrap-around style.
- Offers protection with a full frontal overlap and over-the-shoulder closure.
- Built-in inside buckle prevents inner panel from sagging.
- Minimized VELCRO® attachment allows easy on and off convenience, while maximizing wearer's comfort.
- Built-in shoulder pads offer additional comfort.
- The attached UltraLastic belt, when properly adjusted, moves the majority of the weight from the shoulders to the hips.
- Optional no-charge pocket.
- Available in S-XL.



| Code | Description |
|---------|--|
| SP6-UL | TrueLead™ with UltraLastik Belt |
| XSP6-UL | Ultra XT Lite™ with UltraLastik Belt |
| CSP6-UL | Cirrus Eco Lite™ with UltraLastik Belt |
| SP6-SB | TrueLead™ with SuperBelt |
| XSP6-SB | Ultra XT Lite™ with SuperBelt |
| CSP6-SB | Cirrus Eco Lite™ with SuperBelt |



UL Back



SB Back

| COMFORT WRAP COAT SIZES | | | | | |
|-------------------------|--------|--------|--------|--------------|-------------|
| Size | Chest | Waist | Hip | Front Length | Rear Length |
| Small | 33-36" | 34-37" | 35-38" | 36" | 34" |
| Medium | 37-40" | 38-41" | 39-42" | 38" | 36" |
| Large | 41-44" | 42-45" | 43-46" | 40" | 38" |
| X-Large | 45-48" | 46-50" | 47-50" | 42" | 40" |

Lead Options: p.3
Apron Options: p.27

Fabric/Embroidery: p.22-26
Apron Accessories: p.28-30

ECONOMY FRONTAL

with Tie-Strap Closure

- 1" straps cross the back and tie securely at the front.
- Easy on and off convenience.
- Optional no-charge pocket.
- Available in XS-XXL.



Tie-Strap Back



| Code | Description |
|------|-------------|
| EC | True Lead™ |

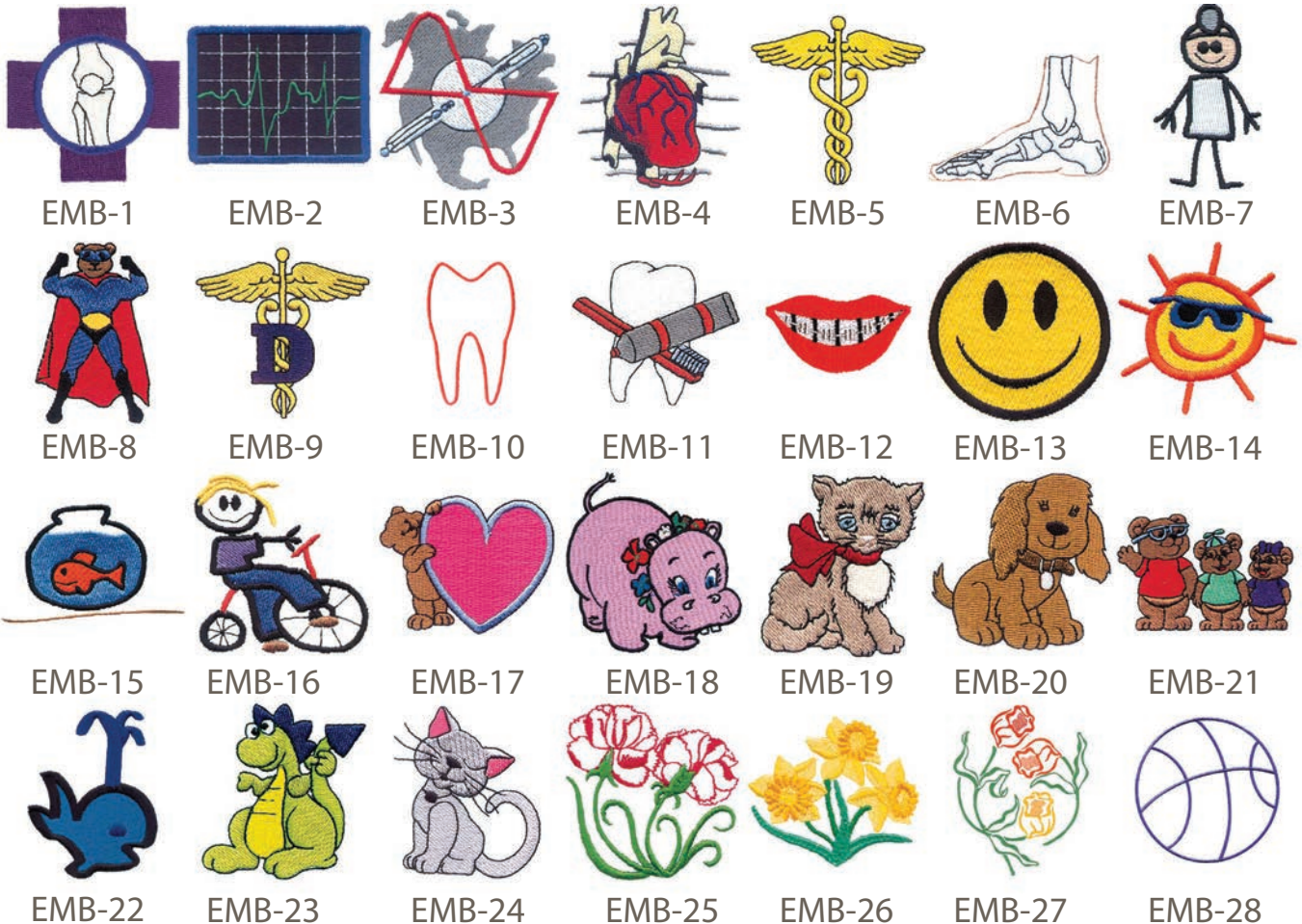
| FRONTAL APRON SIZES | | | |
|---------------------|-----------------------------|----------------|----------------|
| SIZE | Actual Apron Width x Length | Shoulder Width | Max. Chest/Hip |
| X-Small | 20" X 34" | 14" | 34" |
| Small | 22" X 35" | 14½" | 38" |
| Medium | 24" X 37" | 16" | 42" |
| Large | 24" X 39" | 18½" | 44" |
| X-Large | 26" X 41" | 20½" | 46" |
| XX-Large | 28" X 43" | 21½" | 50" |

Lead Options: p.3 Fabric/Embroidery: p.22-26
 Apron Options: p.27 Apron Accessories: p.28-30

- Basic Lettering is available in three type styles (block, brush script, and athletic block).

| | | |
|--------------------------|-----------------|---------------------------|
| Dr. Francis Smart | Block | Diagnostic Imaging |
| <i>Dr. Francis Smart</i> | Script | <i>Diagnostic Imaging</i> |
| Dr. Francis Smart | Athletic | Diagnostic Imaging |

- A logo or design specific to your facility will further enhance the product and clearly identify it.
- Each logo, based on its design and size, must be quoted. A one-time disk setup charge applies on custom



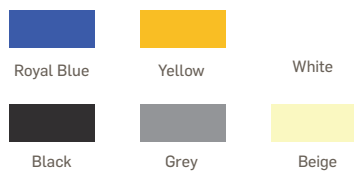
Standard Fabric



RipStop Fabric (Upgrade Charge)



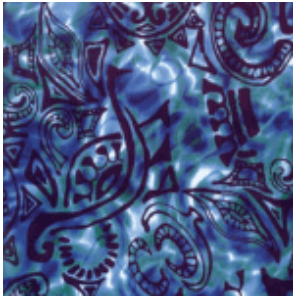
Apron and Curtain Vinyl



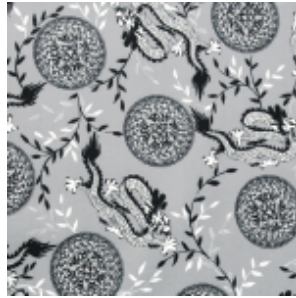
Tablepad Vinyl



Designer Fabric (Upgrade Charge)



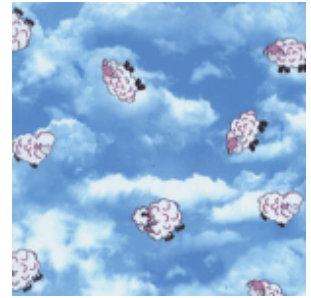
Surf



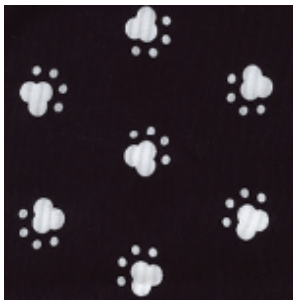
Dragons



Animoos



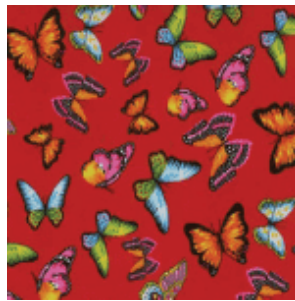
Sheep



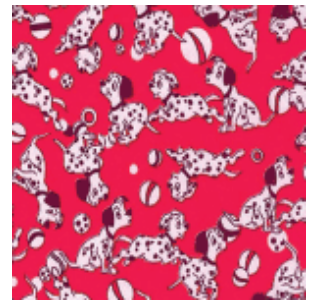
Dog Prints



Black Butterflies



Red Butterflies



Dalmations



Navy Plaid



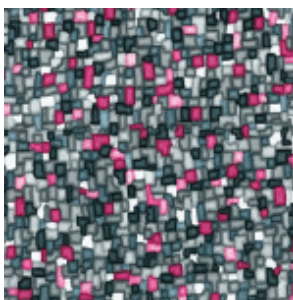
Green Plaid



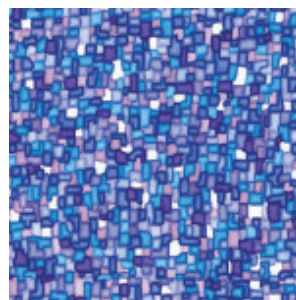
London Plaid



Pink Plaid



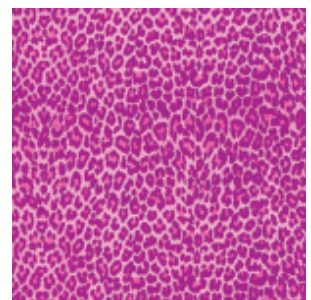
Black Chicklets



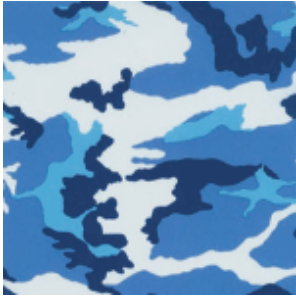
Blue Chicklets



Leopard



Baby Panther Pink



Blue Camo



Navy Camo



Green Camo



Pink Camo



Desert Storm Camo



Purple Flames



Red Flames



Sports



Denim



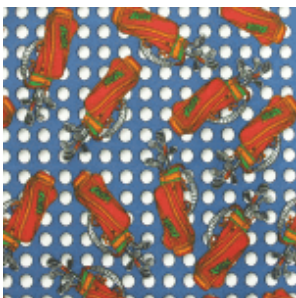
Jeans



Tropical Dream



Skulls



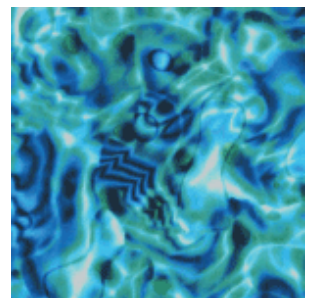
Golf



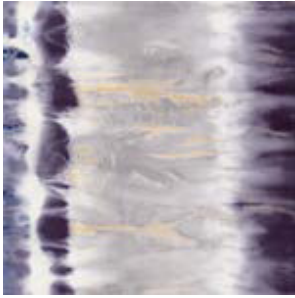
Paint Splash



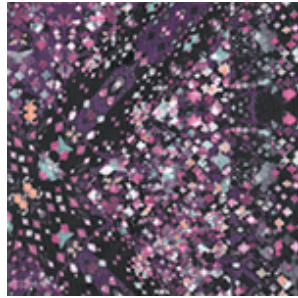
Tahiti



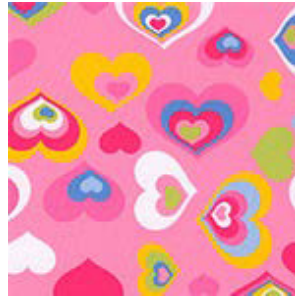
H2O



Cascata X-Ray



Prismatic Purple



Hearts of Colour Pink



Tattoo Hearts



Sweet Pea Green



Sweet Pea Pink



Galaxy Royal



Galaxy Multi



Barbados Blues

* Please contact us for non-standard colors or prints.

* Colors may be added or discontinued at any time.

Binding Colors

(Black is Standard)



Red



Purple



Navy Blue



Royal Blue



Sport Yellow



Light Green



Canadian Blue



Shown Here:

FU-DU
(Fabric Upgrade)

EMB-M (Monogram)

PC (Chest Pocket)

SL-SE
(Sewn-on Sleeve)



Shown Here:

FU-DU
(Fabric Upgrade)

EMB-SD (Stock Design)

PC (Chest Pocket)

AS-SE
(Sewn-on Arm Shield)



Shown Here:

PPV

Pregnancy Panels

20½" wide x 16" long or Made-to-Measure.
Two hangloops are attached for convenience
Available in all apron colors.

VELCRO® Attachment:

Designed with VELCRO® on both front and back to insert between panels of skirt to provide extra protection for the growing fetus.

Buckle Attachment:

Designed with an adjustable VELCRO® belt to be worn under any frontal or coat apron to provide extra protection for the growing fetus.

Embroidery

| Code | Description |
|--------|---|
| EMB-M | Embroidery - Monogram (One charge per Location) |
| EMB-NT | Embroidery - VELCRO® Name Tag (One charge per Location) |
| EMB-SD | Embroidery - Stock Design - (XX) Provide Number |
| EMB-CD | Embroidery - Custom Designs / Logos |

Pockets

| Code | Description |
|------|-------------------------------|
| PC | Pockets - Chest |
| PSH | Pockets - Skirt / Hip / Other |
| PD | Pockets - Dosimeter |

Arm Shields / Sleeves

| Code | Description |
|--------|--|
| AS-SE | Arm Shields - Sewn-on |
| AS-SN | Arm Shields - Removable with Snaps |
| AS-CES | Arm Shields - Sewn-on - Cirrus Eco Lite™ |
| AS-CSN | Arm Shields - Removable with Snaps - Cirrus Eco Lite™ |
| SL-SE | Sleeves - Standard 10"/11"/12" Sewn-on |
| SL-SN | Sleeves - Standard 10"/11"/12" Removable with Snaps |
| SL-CSE | Sleeves - Standard 10"/11"/12" Sewn-on - Cirrus Eco Lite™ |
| SL-CSN | Sleeves - Standard 10"/11"/12" Removable with Snaps - Cirrus Eco Lite™ |
| SLC-SE | Sleeves - Custom Sewn-on |
| SLC-SN | Sleeves - Custom Removable with Snaps |

Misc. Options

| Code | Description |
|------------|---|
| RUSH | Rush Charge |
| FU-DF | Fabric Upgrade - Designer Fabric (Rip Stop or Designer from Chart) |
| FU-PP | Fabric Upgrade - Pick-your-own-print Selections |
| SCT | Safety - Certification Tags / Grommets / ApronChek Button Boxes |
| NCM | No Charge Modifications (See MTM / Modification Details Chart) |
| CMM | Chargeable Minor Modifications (See MTM / Modification Details Chart) |
| MTM | Made-to-Measure or Plus sizes (See MTM / Modification Details Chart) |
| LU | Lead Upgrade - 0.5mm in back of Vest & Skirt / Coat or 0.1mm in Frontal |
| LDAO | Lead Downgrade - Applies to Apron Cost Only |
| TSC | Thyroid Shield Cover - Black only. Fits Standard Thyroid shield |
| PPV or PPB | Pregnancy Panel (20½" wide x 16" long) with VELCRO® or with Belt |

Head Caps

- Protection for your head against scatter radiation.
- Various style, lead type, and equivalency options.

HCS, XHCS, CHCS

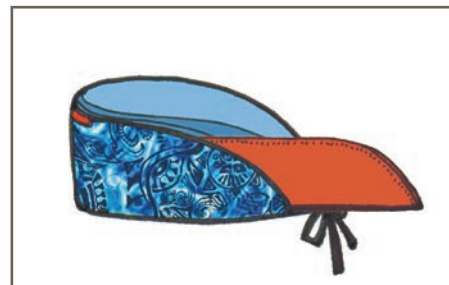
- Scrub style head cap.
- Top and side circumference protection.
- Optional left ear flap for cardiac procedures (-E).

HCSI, XHCSI, CHCSI

- Washable head cap with removable lead insert.
- Side circumference protection with cool mesh top.
- Optional left ear flap for cardiac procedures (-E).

PAGE CAP

- Page style head cap.
- Side circumference protection with cool mesh top.
- VELCRO® back closure provides adjustable snug fit.



Above: Lead insert (orange) can slide in and out easily.



Above: HCSI (blue) with removable lead insert (orange). Once separated, head cap can be hand-washed.

| True Lead | Codes | | Description |
|-----------|------------|-----------|---|
| | XT Lite | Cirrus | |
| N/A | XHCS-125 | N/A | Head Cap Scrub Style - .125mm top and side protection |
| HCS-25 | XHCS-25 | CHCS-25 | Head Cap Scrub Style - .25mm top and side protection |
| HCS-50 | XHCS-50 | CHCS-50 | Head Cap Scrub Style - .50mm top and side protection |
| N/A | XHCSI-125 | N/A | Head Cap Scrub Style - .125mm side protection with insert |
| HCSI-25 | XHCSI-25 | CHCSI-25 | Head Cap Scrub Style - .25mm side protection with insert |
| HCSI-50 | XHCSI-50 | CHCSI-50 | Head Cap Scrub Style - .50mm side protection with insert |
| N/A | XHCS-125E | N/A | Head Cap Scrub Style with Ear Flap - .125mm top and side protection |
| HCS-25E | XHCS-25E | CHCS-25E | Head Cap Scrub Style with Ear Flap - .25mm top and side protection |
| HCS-50E | XHCS-50E | CHCS-50E | Head Cap Scrub Style with Ear Flap - .50mm top and side protection |
| N/A | XHCSI-125E | N/A | Head Cap Scrub Style with Ear Flap - .125mm side protection with insert |
| HCSI-25E | XHCSI-25E | CHCSI-25E | Head Cap Scrub Style with Ear Flap - .25mm side protection with insert |
| HCSI-50E | XHCSI-50E | CHCSI-50E | Head Cap Scrub Style with Ear Flap - .50mm side protection with insert |
| HCP-25 | XHCP-25 | CHCP-25 | Page Cap - .25mm wraparound side protection |
| HCP-50 | XHCP-50 | CHCP-50 | Page Cap - .50mm wraparound side protection |



Thyroid Shields



TSR



TSR-IT



TSB



TSM



TSV

- 0.50mm Lead Equivalent protection. Available in all fabric colors.
- Can be ordered Loose or with Six attachment styles: Sewn-on (integrated), Tethered with Strap, with Buckle, with VELCRO®, with Metal Rings, or with Plastic Tie-Wraps.
- TSR: Standard Thyroid Shield. Our most popular shield.
- TSB: "BIB" Thyroid Shield. No top binding for added comfort. Maximum coverage for wider neckline.
- TSM: Mammography Thyroid Shield. Protects the thyroid gland with minimal interference.
- TSV: Visor-style Thyroid Shield.
- TSS: First quality TSRs (Standard Thyroid Shields). No style or colour choice.

| Codes | | | Description |
|-----------|---------|---------|---|
| True Lead | XT Lite | Cirrus | |
| TSR-IT | XTSR-IT | CTSR-IT | Thyroid Shield - Sewn-on Integrated |
| TSS | TSS | TSS | Thyroid Shield - Random Colors from Stocks |
| TSRL | XTSRL | CTSRL | Thyroid Shield - Standard Loose |
| TSRT | XTSRT | CTSRT | Thyroid Shield - Standard Tethered |
| TSRB | XTSRB | CTSRB | Thyroid Shield - Standard Tethered with Buckle |
| TSRV | XTSRV | CTSRV | Thyroid Shield - Standard Tethered with VELCRO® |
| TSRR | XTSRR | CTSRR | Thyroid Shield - Standard Tethered with Metal Rings |
| TSRP | XTSRP | CTSRP | Thyroid Shield - Standard Tethered with Plastic Tie-Wraps |
| TSBL | XTSBL | CTSBL | Thyroid Shield - No Top Binding Bib Loose |
| TSBT | XTSBT | CTSBT | Thyroid Shield - No Top Binding Bib Tethered |
| TSBB | XTSBB | CTSBB | Thyroid Shield - No Top Binding Bib Tethered with Buckle |
| TSBV | XTSBV | CTSBV | Thyroid Shield - No Top Binding Bib Tethered with VELCRO® |
| TSBR | XTSBR | CTSBR | Thyroid Shield - No Top Binding Bib Tethered with Metal Rings |
| TSBP | XTSBP | CTSBP | Thyroid Shield - No Top Binding Bib Tethered with Plastic Tie-Wraps |
| TSM | XTSM | CTSM | Thyroid Shield - Mammography |
| TSVL | XTSVL | CTSVL | Thyroid Shield - Visor style Loose |
| TSVT | XTSVT | CTSVT | Thyroid Shield - Visor style Tethered |
| TSVB | XTSVB | CTSVB | Thyroid Shield - Visor style Tethered with Buckle |

Lead Options: p.3

Fabric/Embroidery: p.22-26

Apron Carry Bag

- Constructed of 400 denier nylon, this bag will safely transport your apron.

| Code | Description |
|------|---------------------------|
| CB-R | Apron Carry Bag - Regular |
| CB-L | Apron Carry Bag - Large |



SuperBelt



UltraLastik Belt



- Equipped with an adjustable 2" belt and buckle system, the UltraLastik™ Belt helps to shift the weight from your shoulders to your waist, as well as effectively supporting your back. Available in six sizes (XS-XXL).

- Felt lining for comfort. Tear resistant nylon exterior "Pulley" system cinches the belt.
- Available in six sizes (S-XXXL).

| Code | UltraLastik Belt |
|----------|------------------------------|
| ULB-XS | X-Small 24-28" Waist |
| ULB-S | Small 29-33" Waist |
| ULB-M | Medium 34-38" Waist |
| ULB-L | Large 39-43" Waist |
| ULB-XL | X-Large 44-48" Waist |
| ULB-XXL | XX-Large 49-53" Waist |
| ULB-CUST | Custom size UltraLastik Belt |

| Code | SuperBelt |
|---------|------------------------|
| SB-S | Small 25-30" Waist |
| SB-M | Medium 30-35" Waist |
| SB-L | Large 35-40" Waist |
| SB-XL | X-Large 40-45" Waist |
| SB-XXL | XX-Large 45-50" Waist |
| SB-XXXL | XXX-Large 50-55" Waist |

| Code | UltraLastik Belt with Strap & Ring |
|-----------|------------------------------------|
| ULBS-XS | X-Small 24-28" Waist |
| ULBS-S | Small 29-33" Waist |
| ULBS-M | Medium 34-38" Waist |
| ULBS-L | Large 39-43" Waist |
| ULBS-XL | X-Large 44-48" Waist |
| ULBS-XXL | XX-Large 49-53" Waist |
| ULBS-CUST | Custom size UltraLastik Belt |

| Code | SuperBelt with Strap & Ring |
|----------|-----------------------------|
| SBS-S | Small 25-30" Waist |
| SBS-M | Medium 30-35" Waist |
| SBS-L | Large 35-40" Waist |
| SBS-XL | X-Large 40-45" Waist |
| SBS-XXL | XX-Large 45-50" Waist |
| SBS-XXXL | XXX-Large 50-55" Waist |



Open Hand Shield

- This shield resembles a paddle with a cuff. It is used to protect the top of the hand. One-size fits all with a lead-equivalency of 0.5mm.

| Code | Description |
|-------|------------------|
| GL-OH | Open Hand Shield |



Open Palm Mitts

- These mitts are primarily designed for veterinary applications where fingers and thumbs are available to be used in a procedure. One-size fits all with a lead-equivalency of 0.5mm.

| Code | Description |
|-------|-----------------|
| GL-OP | Open Palm Mitts |



Open Palm with Thumb

- Identical to the Open-Palm Mitt with a closed thumb. One-size fits all with a lead-equivalency of 0.5mm.

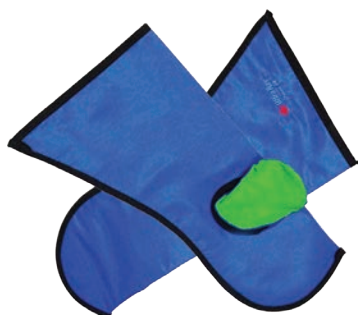
| Code | Description |
|--------|----------------------------|
| GL-OPT | Open Palm Mitts with Thumb |



Ducky Mitts

- These mitts are primarily designed for veterinary applications where fingers and thumbs must be protected. One-size fits all with a lead-equivalency of 0.5mm.

| Code | Description |
|-------|-------------|
| GL-DM | Ducky Mitts |



Closed Mitts with Thumb

- Similar to the Ducky Mitt without the finger pouch. One-size fits all with a lead-equivalency of 0.5mm.

| Code | Description |
|--------|------------------------|
| GL-DMT | Ducky Mitts with Thumb |

Standard Colour: Royal Blue
Optional colors are available.

* Different colors shown are for deliniation purposes only.

Oven Style Mitts

An oven style mitt that offers 360° protection. One-size fits all with a lead-equivalency of 0.5mm.

| Code | Description |
|-------|------------------|
| GL-OM | Oven Style Mitts |



Slit Mitts

A variation of the Oven Style Mitts with the upper section and thumb area open. One-size fits all with a lead-equivalency of 0.5mm.

| Code | Description |
|-------|-------------|
| GL-SM | Slit Mitts |



15" Lead Vinyl Gloves

Each glove features an outer one-piece soft urethane molded design with an inner liner made from breathable nylon for comfort and is easily removed for inspection. Available individually or in pairs with a lead-equivalency of 0.5mm.

| Code | Description |
|-------|-----------------------------------|
| GL15 | Seamless lead vinyl Glove - Pair |
| GL15L | Seamless lead vinyl Glove - Left |
| GL15R | Seamless lead vinyl Glove - Right |



Molded One Piece Gloves

without an Inner Liner

These economical seamless lead vinyl gloves have no liner for easy washing inside and out. Size: Small, Medium and Large with a lead-equivalency of 0.5mm. LATEX FREE.

| Code | Description |
|--------|---------------------------------------|
| GL16-S | Molded One Piece Gloves - Small Pair |
| GL16-M | Molded One Piece Gloves - Medium Pair |
| GL16-L | Molded One Piece Gloves - Large Pair |



UltraLite



- Stylish and comfortable wraparound frame.
- High-impact resistant plastic for safety.
- Colors: Black, Bronze, Carbon Fibre, Pink, Purple/Silver, -Red, Silver and Yellow/Blue.
- Rx: Single and Bifocal.

Maxi



- Unisex shape suits any face and gender.
- Padded temple bars and nose bridge for extra comfort.
- The most durable product in our line.
- Colors: Black, Blue, Red and Silver.
- Rx: Single, Bifocal and Progressive.

Sport Wrap



- Solid, sturdy and extremely comfortable wraparound
- Built-in side-shields for safety.
- Colors: Black/Yellow and Brown/Orange.
- Rx: Single, Bifocal and Progressive.

Contour



- Designed to fit over existing prescription glasses.
- Black rubberized nylon frame.
- Lightweight and comfortable.
- Colors: Black and Tortoise.

Fitover - Regular



- Designed to fit over existing prescription glasses.
- Black rubberized nylon frame.
- Lightweight and comfortable.
- Colors: Black and Tortoise.

Fitover - Large



- Designed to fit over existing prescription glasses.
- Black rubberized nylon frame.
- Lightweight and comfortable.
- Colors: Black and Tortoise.

Racer



- Stylish wrap-around frame constructed of high impact TR-90 nylon.
- Rubberized soft grip temple bars.
- 8 base wrap around lenses for full protection around the orbit of the eye

The Lex



- Comfortable, lightweight and sturdy wide fit frame.
- Rubberized nose pads and temple bars provide a comfortable grip.
- Wraparound design ensures that your eyes are protected.



Webby Designer

- Very chic head-hugging design for ladies
- Durable nylon plastic high-impact safety frame.
- Chemical resistant.
- Colors: Black/White and Blue/Black.
- Single, Bifocal and Progressive.



Basic 52 Wrap

- Excellent peripheral vision with leaded glass side shields.
- Economical and lightweight with a spring hinge.
- Silicone, adjustable non-slip uni-fit bridge
- Rx: Single, Bifocal and Progressive.



Stars

- Premium protective women's eyewear.
- "Jackie-O" sunglasses style with large lenses.
- Excellent splash and side protection.
- Colors: Black/White and Red/Black.
- Rx: Single, Bifocal and Progressive.



Leopard

- Designer flair for style and performance.
- Head-hugging temple design with splash and side protection.
- Colors: Black and Tortoise.
- Rx: Single, Bifocal and Progressive.

EGM Mini Wraparound



- Stylish wrap-around frame constructed of high impact TR-90 nylon.
- Rubberized soft grip temple bars.
- Rubberized saddle bridge nose pad for extra comfort
- Stylish two-tone rubberized temple bars.

Splash Goggles - Regular



- Excellent peripheral vision with leaded glass side-shields.
- Economical and lightweight with a spring hinge.
- Comes with a silicone non-slip.
- Colors: As shown.
- Rx: Single, Bifocal and Progressive.

Splash Goggles - Large



- Excellent peripheral vision with leaded glass side-shields.
- Economical and lightweight with a spring hinge.
- Comes with a silicone non-slip.
- Colors: As shown.
- Rx: Single, Bifocal and Progressive.

Please Note: All glasses are 0.75mm L.E. Side-Shields (If equipped) are 0.50mm L.E. with the exception of models with integral .75mm lateral shield. All glasses include a protective case and strap.

Scatter Protector

(Full or Half Mask)

- Transparent ultralight lead acrylic.
- Shield is suspended from an adjustable headpiece.
- Both feature a headband support with an adjustable dial for circumference and angular positioning for that perfect fit and maximum protection.
- Non-Rx only.

CAUTION: Lead Equivalency = 0.10mm

Do not sterilize or use abrasive cleaning materials.

Full Mask: 8" Wrap-around design (Weight: 395g)

Half Mask: 5" Wrap-around design (Weight: 350g)



THE INDUSTRY EYEWEAR LEADER IN LASER PROCEDURE PROTECTION

The Laser Eyewear featured on this page is available with over 15 different filters. Many more frames are also available. Please consult with one of our Sales Representatives.

FEATURES & BENEFITS

Multi-wavelength laser filter lenses with excellent light transmission qualities for Alexandrite Diode, Homium, YAG and CO₂ Lasers. Wide range of nanometre (nm) wavelength protection ranges available. Premium filter lenses that transmit maximum visible light for superior clarity during laser procedures. Prescription laser eyewear available.

Available Frames



Fitover Frame



Lex Frame



Maxi Frame

| | Fitover Frame (Black only) | Lex Frame (Black, Silver, Red) | Maxi Frame (Black, Silver, Red) |
|-------------------------------------|-------------------------------|-----------------------------------|------------------------------------|
| Homium/YAG/CO ₂ Filter | ✓ | ✓ | |
| Prescription Laser Eyewear | | | ✓ |
| Dual (Laser & Radiation) Protection | | ✓ | |
| Alexandrite Diode/YAG Filter | ✓ | ✓ | |

Homium/YAG/CO₂ Filter

- The lens is used as an infrared filter.
- Pale blue in color, it offers exceptional multi-wavelength protection in Homium, YAG, CO₂ laser environment.

| Wavelength | Optical Density | Lens Colour | Visible Light Transmission |
|--------------|-----------------|-------------|----------------------------|
| 900-1000nm | 5+ | Pale Blue | Excellent |
| 1000-1500nm | 7+ | Pale Blue | Excellent |
| 1500-2400nm | 7+ | Pale Blue | Excellent |
| 2900-10600nm | 7+ | Pale Blue | Excellent |

Prescription Laser Eyewear

- For the Homium/YAG/CO₂ filter.
- Single vision: +/- 3.00
- Bifocal: +/- 3.00

Dual (Laser & Radiation) Protection

- Protection combination eyewear.
- A .75mm lead equivalency lens with a laser filter.

Alexandrite Diode/YAG Filter

- It is a multi-wavelength filter with very high light transmission.
- Qualifies for both Alexandrite Diode and YAG lasers.

| Wavelength | Optical Density | Lens Colour | Visible Light Transmission |
|------------|-----------------|-------------|----------------------------|
| 700-1200nm | 7+ | Light Blue | 64% |

CO₂/Excimer Filter

- CO₂ and Excimer lasers are used frequently in ophthalmology and in dermatology.
- Anti-reflective coating comes standard.

| Wavelength | Optical Density | Lens Colour | Visible Light Transmission |
|------------|-----------------|-------------|----------------------------|
| 190-370nm | 5+ | Clear | 82% |
| 10600nm | 6+ | Clear | 82% |

Patient Half-Apron with Buckle/VELCRO®/Hoop Closure

Buckle/VELCRO® Closure

A patient half-apron with a 2" belt and optional Buckle (-B) or VELCRO® (-V) waist closure to provide adjustability where required. Available individually or as a set of 4, with or without a wall-mounted rack. When ordering, please choose the code with either a -B or a -V at the end (Example: Choose PED1-B to order a PED1 with a buckle waist closure).

Hoop Closure

Patient half-apron with a flexible vinyl covered spring steel hoop. Available individually or as a set of 4, with or without a wall-mounted rack.

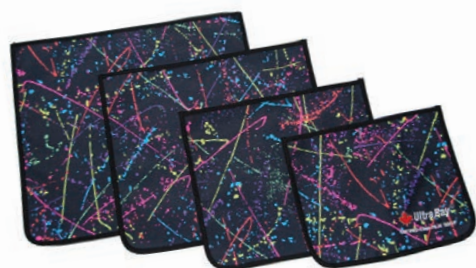
Standard Color: Royal Blue.
Optional Colors: See Color Chart.
Custom Sizes: Available upon request.

| Code (Buckle/Velcro) | Code (Hoop) | Description |
|----------------------|-------------|--|
| PED1-B or PED1-V | PED1-H | Pediatric Half-Apron 10" x 12" |
| HA1-B or HA1-V | HA1-H | Patient Half-Apron 12" x 14" |
| HA2-B or HA2-V | HA2-H | Patient Half-Apron 14" x 16" |
| HA3-B or HA3-V | HA3-H | Patient Half-Apron 16" x 18" |
| HA4-B or HA4-V | HA4-H | Patient Half-Apron 18" x 20" |
| HA5-B or HA5-V | HA5-H | Patient Half-Apron 18" x 24" |
| HA6-B or HA6-V | HA6-H | Patient Half-Apron 24" x 24" |
| HASET-B or HASET-V | HASET-H | Patient Half-Apron Set - 1 ea. of PED1, HA1, HA2 & HA3 |
| HAR-BV | HAR-H | Wall-Mounted Rack only - Holds HASET |
| HASETR-B or HASETR-V | HASETR-H | Patient Half-Apron and Rack Set |
| HAB-CUST or HAV-CUST | HAH-CUST | Patient Half-Apron - Custom Size |

CT Patient Gonadal Wrap

CT Patient Gonadal Apron with a VELCRO® closure.

| Code | Description | L.E. |
|----------|---------------------------------|-------|
| PGW-1855 | CT Patient Gonad Wrap 18" x 55" | 0.5mm |
| PGW-2448 | CT Patient Gonad Wrap 24" x 48" | 0.5mm |
| PGW-3060 | CT Patient Gonad Wrap 30" x 60" | 0.5mm |



Adult Gonad Shields

One set of three Adult Gonad Shields (1 each of 3", 5" & 7" diameter). 0.5mm or 1.0mm lead equivalent protection.

2" Buckle Belt with a VELCRO® strip is also available. Comes with 1 set of 3 Adult Gonad Shields that can be

| Code | Description | L.E. |
|---------|--|-------|
| AGS-5 | 3 Adult Gonad Shields (3", 5" & 7" diameter) | 0.5mm |
| AGS-10 | 3 Adult Gonad Shields (3", 5" & 7" diameter) | 1.0mm |
| AGSB-5 | 1 Adult Gonad Shield Belt with 1 AGS-5 | 0.5mm |
| AGSB-10 | 1 Adult Gonad Shield Belt with 1 AGS-10 | 1.0mm |



Triangular Gonad Shields

| Code | Description | L.E. |
|------|-------------------------|-------|
| TGS | Triangular Gonad Shield | 0.5mm |



Scoliosis Shawl/Breast Protector

Scoliosis Shawl / Breast Protector panels provide breast and lung protection without compromising spinal image quality.

Alternative to the Scoliosis Shawl is Set of Adult Breast Shields. VELCRO® neck strap allows for various placement of the shields. Four sizes of shields in each

| Code | Description | L.E. |
|-------|------------------------------------|-------|
| SS-BS | Scoliosis Shawl / Breast Protector | 0.5mm |
| ABS | Adult Breast Shields - Set of 4 | 0.5mm |



Pediatric Frontal Aprons

Based on Adult Frontal styles, these aprons are sized for pediatric use. Comes with integrated Thyroid Shield.



PBA2
(FRONT)

PBA2
(BACK)

| Size | Description |
|--------------|-------------|
| Small (1-3) | 12" x 22" |
| Medium (4-6) | 15" x 26" |
| Large (7-11) | 18" x 32" |

| Code | Description |
|----------|--|
| PBA1 | Pediatric Frontal Apron with VELCRO® Closure |
| PBA1-SET | Set of PBA1 in Small, Medium & Large |
| PBA2 | Pediatric Frontal Apron with Buckle Closure |
| PBA2-SET | Set of PBA2 in Small, Medium & Large |
| PBA3 | Pediatric Frontal Apron with Tie-Strap Closure |
| PBA3-SET | Set of PBA3 in Small, Medium & Large |



Pediatric Thyroid Shields

Set of 3 sizes.

Small (6½" x 3"), Medium (7½" x 3½") & Large (8½" x 4")

| Code | Description |
|------|--------------------------------------|
| PTS | Pediatric Thyroid Shields - Set of 3 |

Pediatric Breast Shields

Smaller alternative to the Scoliosis Shawl that may be too large for children. Perfect for Pediatric Spinal exams. VELCRO® neck strap allows for various placement of shields.

Set of 3 sizes.

Two (4½" x 5½"), Two (6¾" x 8") & Two (7¾" x 10")

Available in 0.5mm True Lead.



| Code | Description |
|------|-------------------------------------|
| PBS | Pediatric Breast Shields - Set of 6 |

Pediatric Gonad Shields

Set of 4 sizes:

Small (3½" x 2¾"), Medium (4½" x 3½"), Large (5½" x 4½") & Extra Large (6½" x 5½").

Pediatric Diapers

Set of six diapers sizes 1 - 6.

Size 1 = 8 - 14 lbs.

Size 2 = 12 - 18 lbs.

Size 3 = 16 - 28 lbs.

Size 4 = 22 - 37 lbs.

Size 5 = 27 - 34 lbs.

Size 6 = 35 - 41 lbs.

Available in 0.5mm True Lead.

| Code | Description |
|------|------------------------------------|
| PGS | Pediatric Gonad Shields - Set of 4 |
| PDS | Pediatric Diapers |

PGS



PDS



Pediatric Mittens

Full wraparound protection while positioning pediatric patients. Features a VELCRO® wrist strap and a soft

| Code | Description |
|------|--------------------------|
| PM | Pediatric Mittens - Pair |



Pediatric Sandbags

Blue nylon or vinyl sandbags with or without handles.

| Code | Description |
|------------------------|---|
| SBSET2-N or SBSET2-V | Pediatric Sandbag Set - 3 x 3lbs - No handles |
| SBSET2H-N or SBSET2H-V | Pediatric Sandbag Set - 3 x 3lbs - With handles |





Mobile Cassette Holder

Used to hold cassettes, grids or CR-Plates (8"x10" to 14"x17") during mobile procedures. The all-metal unit stands on a sturdy three-legged base with swivel locking casters. Can be used in Radiology, MRI or CT. Maximum Height: 46".Color: Beige

| Code | Description |
|-------|---|
| MCH | Mobile Cassette Holder with L/R Tilt |
| MCH-T | Mobile Cassette Holder with L/R Tilt & U/D Tilt |



Sandbags with/without handles

Sandbags are rectangular in shape and come in a wide range of stock sizes. An inner bladder is filled with sand and then inserted into a blue nylon or vinyl bag.

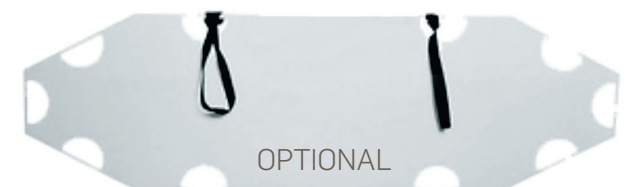
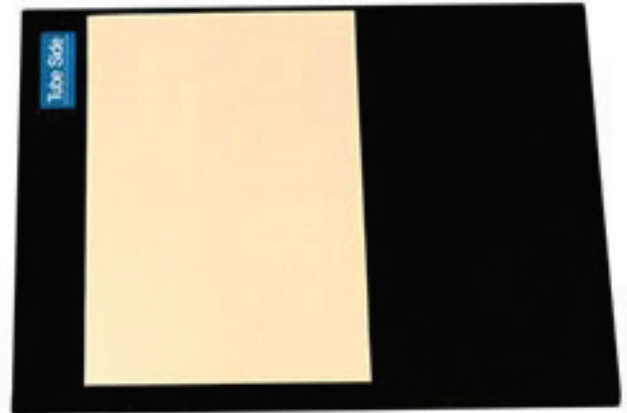


| Code (NO HANDLES, Nylon or Vinyl) | Code (WITH HANDLES, Nylon or Vinyl) | Description |
|-----------------------------------|-------------------------------------|---|
| SB3-N or SB3-V | SB3H-N or SB3H-V | 3 lbs. Sandbag - 7" x 7" |
| SB5-N or SB5-V | SB5H-N or SB5H-V | 5 lbs. Sandbag - 7" x 12" |
| SB7-N or SB7-V | SB7H-N or SB7H-V | 7 lbs. Sandbag - 6" x 17" |
| SB10-N or SB10-V | SB10H-N or SB10H-V | 10 lbs. Sandbag - 11" x 11" |
| SB12-N or SB12-V | SB12H-N or SB12H-V | 12 lbs. Sandbag - 7" x 24" |
| SB13-N or SB13-V | SB13H-N or SB13H-V | 13 lbs. Sandbag - 12" x 12" |
| SB15-N or SB15-V | SB15H-N or SB15H-V | 15 lbs. Sandbag - 11" x 15" |
| SB20-N or SB20-V | SB20H-N or SB20H-V | 20 lbs. Sandbag - 8½" x 22" |
| CVB-N or CVB-V | CVBH-N or CVBH-V | Cervical Sandbag Set (2 of 10 lbs) |
| SBSET1-N or SBSET1-V | SBSET1H-N or SBSET1H-V | Set - 1 ea. of 5, 10, 15 & 20 lbs |
| SBSET2-N or SBSET2-V | SBSET2H-N or SBSET2H-V | Pediatric Set - 3 x 3 lbs |
| SBSET3-N or SBSET3-V | SBSET3H-N or SBSET3H-V | Set - 1 ea. of 3, 7, 12 & 13 lbs |
| SBSET4-N or SBSET4-V | SBSET4H-N or SBSET4H-V | Set - 1 ea. of 3, 5, 7, 10, 12, 13, 15 & 20 lbs |
| SB-CUST | SB-CUST | Custom sandbag |

Film Blockers

A lead-sheet that is sandwiched between two sheets of washable vinyl and available in many sizes.

| 0.5mm L.E. | | 1.0mm L.E. | |
|------------|-----------|------------|-----------|
| Code | Size | Code | Size |
| BL5-410 | 4" x 10" | BL10-410 | 4" x 10" |
| BL5-508 | 5" x 8" | BL10-508 | 5" x 8" |
| BL5-512 | 5" x 12" | BL10-512 | 5" x 12" |
| BL5-5514 | 5½" x 14" | BL10-5514 | 5½" x 14" |
| BL5-610 | 6" x 10" | BL10-610 | 6" x 10" |
| BL5-711 | 7" x 11" | BL10-711 | 7" x 11" |
| BL5-715 | 7" x 15" | BL10-715 | 7" x 15" |
| BL5-717 | 7" x 17" | BL10-717 | 7" x 17" |
| BL5-8514 | 8½" x 14" | BL10-8514 | 8½" x 14" |
| BL5-CUST | Custom | BL10-CUST | Custom |



Transfer Board

This radiolucent transfer board promotes safe and easy patient transfers. Although not anti-static, the slippery surface permits easy placement under the patient. With minimal help, you can move the patient from bed to gurney to X-ray table. Leave the unit under the patient during the exam.

Can be used in Radiology, MRI or CT.

| Code | Description |
|---------|---|
| TB-SHT | Short Transfer Board 32" x 22" x 3/16" |
| TB-SLM | Slim Transfer Board 72" x 18" x 3/16" |
| TB-STD | Standard Transfer Board 72" x 22" x 3/16" |
| TB-XLG | X-Large Transfer Board 72" x 32" x ¼" |
| TB-CUST | Custom Transfer Board |
| TB-WSR | Transfer Board Wall Storage Rack 8" x 3" |



Patient Caliper

The caliper is made of lightweight aluminum with an adjustment slide. No screws to lose.

| Code | Description |
|------|---------------------------------|
| CAL | Patient Caliper. Weight: 2 lbs. |



F-Spoon

Handheld lever-action radiolucent device used by a radiologist during supine abdominal fluoroscopy to displace bowel loops from one another and to better visualize tumors, ulcers and other abnormalities of the gastrointestinal tract.

| Code | Description |
|------|------------------------|
| FS | F-Spoon. Weight: 3 lbs |



Vertical Traction Strap

The Vertical-Traction Straps are for use during cervical studies, especially C-7. When the patient extends his legs he applies equal traction on each arm. Made of 2" wide seatbelt webbing.

| Code | Description |
|------|-------------------------|
| VTS | Vertical Traction Strap |



Multi-Strap

Double-sided Hook & Loop strap. Strong as tape but soft to the skin. Reusable, radiolucent, and easily applied.

Custom Sizes: Available.

| Code | Description |
|--------|---------------------------------|
| MS3015 | 1 roll of Multi-Strap 30' x 1½" |
| MS3025 | 1 roll of Multi-Strap 30' x 2½" |
| MS3045 | 1 roll of Multi-Strap 30' x 4½" |

Urethral Compression Device

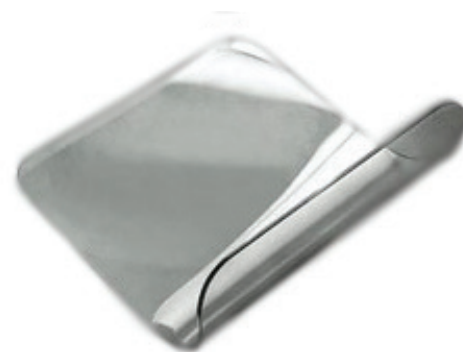
This device is used in excretory urography. The belt fits around the patient's waist for rapid repositioning for studies at any angle. The belt is 65" long and the plastic plate is sewn into the belt for easy handling. Latex free.



| Code | Description |
|-------|-------------------------------|
| UCD | Urethral Compression Device |
| UCD-B | Balloons with Covers - 1 pair |

Arm Support

Slips under the mattress and around the patient's arm to prevent movement while in a prone or supine position. Excellent for use during specials, catheterization and nuclear medicine studies, the clear plastic provides a view of the patient at all times.



| Code | Description |
|------|----------------------------------|
| AS | 1pr. Arm Support. Weight: 4 lbs. |

Pneumatic Compression Paddle

Used for guided compression during radiographic studies of the gastrointestinal tract. Made of Lucite. The imbedded metal ring provides quick fluoroscopic localization. Latex free.



| Code | Description |
|------|------------------------------|
| PCP | Pneumatic Compression Paddle |
| PRB | Replacement Bladder |
| PRIB | Replacement Inflator Bulb |
| PCPR | Wall Rack for PCP |

Table Pads

Table Pads come with a Royal Blue vinyl or nylon covering in your choice of Regular, Dura-foam (Closed-Cell) or Memory superior quality mold and mildew resistant foam. Please refer to the chart below for standard sizes.



Shown: TP-CUST with TPHS (Custom Table Pad with

| 1" Foam Table Pads | | | |
|-----------------------|-----------------------|-----------------|--------------|
| Code (Nylon Cover) | Code (Vinyl Cover) | Size | Foam Type |
| TPNR1-7827 | TPVR1-7827 | 78" x 27" x 1" | Regular |
| TPND1-7827 | TPVD1-7827 | 78" x 27" x 1" | Dura-foam |
| TPNM1-7827 | TPVM1-7827 | 78" x 27" x 1" | Memory |
| TPNR1-7224 | TPVR1-7224 | 72" x 24" x 1" | Regular |
| TPND1-7224 | TPVD1-7224 | 72" x 24" x 1" | Dura-foam |
| TPNM1-7224 | TPVM1-7224 | 72" x 24" x 1" | Memory |
| TPNR1-7219 | TPVR1-7219 | 72" x 19" x 1" | Regular |
| TPND1-7219 | TPVD1-7219 | 72" x 19" x 1" | Dura-foam |
| TPNM1-7219 | TPVM1-7219 | 72" x 19" x 1" | Memory |
| TPNR1-6024 | TPVR1-6024 | 60" x 24" x 1 " | Regular |
| TPND1-6024 | TPVD1-6024 | 60" x 24" x 1 " | Dura-foam |
| TPNM1-6024 | TPVM1-6024 | 60" x 24" x 1 " | Memory |
| TPNR1-4221 | TPVR1-4221 | 42" x 21" x 1" | Regular |
| TPND1-4221 | TPVD1-4221 | 42" x 21" x 1" | Dura-foam |
| TPNM1-4221 | TPVM1-4221 | 42" x 21" x 1" | Memory |

| 2" Foam Table Pads | | | |
|-----------------------|-----------------------|----------------|--------------|
| Code (Nylon Cover) | Code (Vinyl Cover) | Size | Foam Type |
| TPNR2-7827 | TPVR2-7827 | 78" x 27" x 2" | Regular |
| TPND2-7827 | TPVD2-7827 | 78" x 27" x 2" | Dura-foam |
| TPNM2-7827 | TPVM2-7827 | 78" x 27" x 2" | Memory |
| TPNR2-7224 | TPVR2-7224 | 72" x 24" x 2" | Regular |
| TPND2-7224 | TPVD2-7224 | 72" x 24" x 2" | Dura-foam |
| TPNM2-7224 | TPVM2-7224 | 72" x 24" x 2" | Memory |

| Table Pads Options | |
|--------------------|--|
| Code | Description |
| TPHS | Table Pad - Hanging Straps (side or top) |
| TPHG | Table Pad - Handle Grips with 8" Flaps |
| TP-CUST | Custom Table Pad |

Radiation Warning Signs

Brightly coloured plastic warning signs. Double-faced mounting tape for easy and convenient installation. Available in English (E), French (F) and Bilingual (B). Custom signs available. 7" W x 9.5" H.

| Code | Description |
|-------------------|-------------------------|
| RWS-E RWS-F RWS-B | Radiation Warning Signs |
| RWS-CUST | Custom Sign |

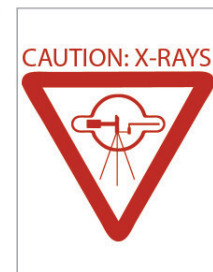
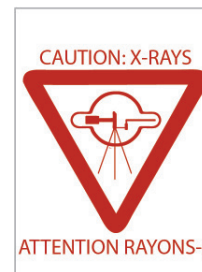
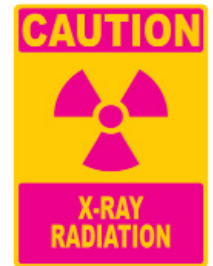
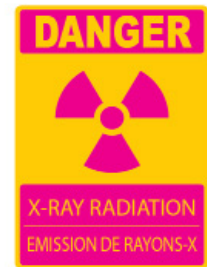
White Plastic warning sign with red lettering. Double-faced mounting tape for easy and convenient installation. Available in English (RE) and Bilingual (RB). Custom signs available. 6" W x 8" H.

| Code | Description |
|---------------|-------------------------|
| RWS-RE RWS-RB | Radiation Warning Signs |

Pregnancy Warning Signs

Black plastic sign with white lettering. Double-faced mounting tape for easy and convenient installation. Available in English (E), 8" W x 10" H and Bilingual (B), 10" W x 16" H.

| Code | Description |
|-------------|-------------------------|
| PWS-E PWS-B | Pregnancy Warning Signs |



Wall-Mounted Tubular Rack

Chrome Lead Apron and Glove Holder, Holds one apron and one pair of gloves. No assembly required. Installation hardware is not included.

| Code | Details | Dimensions | Weight |
|------|---------------------------|---|---------|
| ART | Wall-Mounted Tubular Rack | 27.75"W x 17"H x 5 ¹ / ₄ "D | 8.5 lbs |



Wall-Mounted Compact Rack

Ideal wall mount rack for storing multiple pairs of gloves and aprons. Also has convenient bar to hold thyroid collars. Sturdy steel construction. No assembly required. Installation hardware is not included.

| Code | Details | Dimensions | Weight |
|------|---------------------------|---------------------|--------|
| ARC | Wall-Mounted Compact Rack | 19" W x 20" H x 8"D | 10lbs |

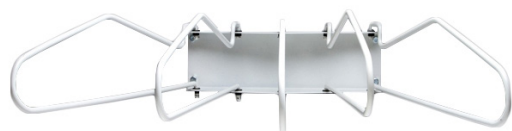


Wall Mount Full Swing Rack

Excellent storage capacity. This heavy duty metal rack holds up to five aprons on 5 pivoting apron hangers. Each hanger can swing a full 180 degrees to either left or right. Maximum suggested weight capacity of 110 pounds. Some assembly required. Installation hardware is not included.

Arms perpendicular to the wall: 22"

| Code | Details | Dimensions (Plate) | Weight |
|-------|--|---|--------|
| AR6FS | Wall-Mounted Left and Right Folding Apron Rack | 17" W x 4 ⁵ / ₈ " H | 15lbs |



Wall Mounted Towel Bar Rack 1 & 2

When mounted securely to a wall, can hold one apron (but will accommodate more). 1.75" diameter bar will prevent apron creasing and possible lead damage. Glove holders are mounted onto back panel and located side by side. Available with glove holder for 1 pair or 2 pairs of gloves. All steel heavy duty construction. No assembly required. Installation Hardware is not included.

| Code | Details | Dimensions | Weight |
|-------|-----------------------------|---|--------|
| ARTB1 | Wall Mounted Towel Bar Rack | 28" W x 7" H x 6 ¹ / ₂ " D With glove holder 25" H | 13lbs |
| ARTB2 | Wall Mounted Towel Bar Rack | 28" W x 7" H x 6 ¹ / ₂ " D With glove holder 25" H | 14lbs |



Wall-Mounted Peg Rack

Peg racks are a quick, easy, durable storage solution. They are constructed of steel with an electro-magnetic powder coating. When mounted securely to a wall, peg racks can hold anywhere from 1-9 aprons depending on size. All pegs measure 4.5" L and are slanted to prevent apron from slipping off peg. No assembly required. Installation Hardware is not included.

| Code | Details | Dimensions | Weight |
|------|-------------------|--------------------|---------|
| ARP1 | 1 Apron / 2 peg | 6"W x 3"H x 4.5"D | 4.2lbs |
| ARP2 | 2 Aprons / 4 peg | 12W" x 3"H x 4.5"D | 6lbs |
| ARP4 | 4 Aprons / 8 peg | 19W" x 3"H x 4.5"D | 12lbs |
| ARP7 | 7 Aprons / 14 peg | 36"W x 3"H x 4.5"D | 13.6lbs |
| ARP9 | 9 Aprons / 18 peg | 50"W x 3"H x 4.5"D | 18lbs |





Five Arm Lead Apron Wall Rack

Holds up to five aprons on five arms. It features five chromium-plated pivoting hangers which can flatten out nearly 180 degrees for space saving and storage behind doors, equipment, and more. Arms can swing either left or right. Weight capacity 110lbs. No assembly required. Installation hardware is not included.

| Code | Details | Dimensions | Weight |
|------|---------------------------------------|--|--------|
| AR6L | Wall-Mounted Left to Right Apron Rack | Arms flush against the wall 28"W x 9" H x 4 ¹ / ₈ " D | 15lbs |
| AR6R | Wall-Mounted Right to Left Apron Rack | Arms flush against the wall 28"W x 9" H x 4 ¹ / ₈ " D | 15lbs |



Mobile Maxi-Rack with AR6L and AR6R

The mobile Maxi-Rack is the solution when wall mounting AR6 Racks are not possible or mobility is required. Supports 1 left folding and 1 right folding rack. Holds 10 aprons on pivoting arms. Weight capacity 600lbs. Equipped with 4 swivel castors (2 with brakes). Some assembly required.

| Code | Details | Dimensions | Weight |
|------|---|--------------------|--------|
| ARMX | Maxi-Rack complete with 1 AR6L and 1 AR6R | 54"W x 54"H x 20"D | 125lbs |



Vest & Skirt Mobile Rack

Heavy-duty metal apron rack with locking casters. Holds 10 vest and skirt aprons.

| Code | Details | Dimensions | Weight |
|------|--------------------------|--------------------|--------|
| ARVS | Vest & Skirt Mobile Rack | 39"W x 55"H x 26"D | 120lbs |



Mobile Pedestal Apron Rack

Pedestal design is counter weighted for the utmost stability. Holds up to 10 aprons on pivoting arms that fold flat. Will safely hold the heaviest lead.

| Code | Details | Dimensions | Weight |
|---------|----------------------------|---|--------|
| ARMX-HB | Mobile Pedestal Apron Rack | 20"W x 49 ¹ / ₂ "H x 24"D | 60lbs |

Mobile Apron Rack

Heavy-duty metal apron rack with 4 swivel casters (2 casters are equipped with brakes for locking). Hangers not included.

Small: holds 5-8 aprons or a total weight of 150 lbs.

Large: holds 10-13 aprons or a total weight of 300 lbs.

| Code | Details | Dimensions | Weight |
|------|-------------------------|--|-------------------------|
| AR5 | Small Mobile Apron Rack | 23 ¹ / ₂ " L" 54"H x 22 ¹ / ₂ "W | 28lbs / 32lbs w hangers |
| AR10 | Large Mobile Apron Rack | 35 ¹ / ₂ " L" 54"H x 22 ¹ / ₂ "W | 33lbs / 41lbs w hangers |



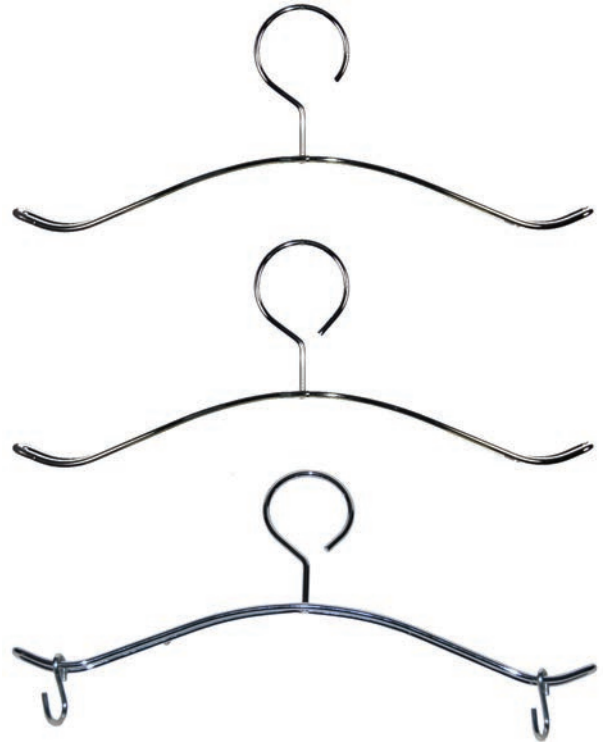
KITS

| Code | Details |
|-----------|--|
| AR5KIT-O | Holds 5 to 8 Aprons includes 5 hangers - OPEN HANGERS |
| AR5KIT-C | Holds 5 to 8 Aprons includes 5 hangers - CLOSED HANGERS |
| AR10KIT-O | Holds 10 to 13 Aprons includes 10 hangers - OPEN HANGERS |
| AR10KIT-C | Holds 10 to 13 Aprons includes 10 hangers - CLOSED HANGERS |

Apron Hanger

A chrome plated steel hanger designed to hang the heaviest apron on an apron rack or to hang it on a hook behind a door or wall hook. Raised end design prevents apron from slipping off the hanger.

| Code | Details | Dimensions | Weight |
|------|----------------------------|-------------|--------|
| ARHO | Apron Hanger (Open Loop) | 19" W x 8"H | 1lb |
| ARHC | Apron Hanger (Closed Loop) | 19" W x 8"H | 1lb |



Vest & Skirt Apron Hanger

A chrome plated steel hanger with skirt hooks.

| Code | Details | Dimensions | Weight |
|---------|-----------------------------------|-------------|--------|
| ARHO-SH | Vest & Skirt Hanger (Open Loop) | 19" W x 8"H | 1.6lb |
| ARHC-SH | Vest & Skirt Hanger (Closed Loop) | 19" W x 8"H | 1.6lb |

Mobile Spider Apron Rack

An apron storage rack with eight spiral arms atop a post that is mounted on a star-shaped five leg base with nylon casters that is suitable for an Operating Room or a Cath Lab. Arms are slanted for better hold of aprons. This apron rack is available with optional glove holders, holding 3 pairs of gloves. Weight capacity 200lbs.

| Code | Details | Dimensions | Weight |
|--------|---|-------------------------------|--------|
| AR8 | Mobile Spider Apron Rack | 51" H x 24" W | 30lbs |
| AR8-GH | Mobile Spider Apron Rack with Glove Holders | 61 ^{1/2} " H x 24" W | 36lbs |

Mobile Spider Apron Rack



Top View of Rack with Glove Holders

Wall-Mounted Rack for Half Aprons

Each rack accommodates 4 half-aprons. Half-aprons are not included. HAR-BV holds VELCRO® or Buckle half-aprons, and HAR-H holds Hoop half-aprons.



HAR-BV

HAR-H



| Code | Details | Dimensions | Weight |
|--------|--|-----------------------|---------|
| HAR-BV | Wall-Mounted Rack only (Holds 4 VELCRO® or Buckle Half-Aprons) | 21" L x 3½" H x 4" D | 5.8/bs |
| HAR-H | Wall-Mounted Rack only (Holds 4 Hoop Half-Aprons) | 17½" L x 4" H x 9¼" D | 10.8lbs |

Table Scatter Shield

We also manufacture custom-made screens and shields in all sizes and types. Supplied with or without hardware. See pages 22-24 for fabric options.



| Code | Description |
|----------|--|
| TDS-4824 | Single Table Shield 48" x 24" - 0.5mm L.E. |
| TDS-4828 | Single Table Shield 48" x 28" - 0.5mm L.E. |
| TDS-4836 | Single Table Shield 48" x 36" - 0.5mm L.E. |
| TDS-3624 | Single Table Shield 36" x 24" - 0.5mm L.E. |
| TDS-3628 | Single Table Shield 36" x 28" - 0.5mm L.E. |
| TDS-3636 | Single Table Shield 36" x 36" - 0.5mm L.E. |
| TDD-4824 | Double Table Shield 48" x 24" - 0.5mm L.E. |
| TDD-4828 | Double Table Shield 48" x 28" - 0.5mm L.E. |
| TDD-4836 | Double Table Shield 48" x 36" - 0.5mm L.E. |
| TDD-3624 | Double Table Shield 36" x 24" - 0.5mm L.E. |
| TDD-3628 | Double Table Shield 36" x 28" - 0.5mm L.E. |
| TDD-3636 | Double Table Shield 36" x 36" - 0.5mm L.E. |
| TD-CUST | Custom Table Shield |
| ATS-3228 | Table Shield 32" x 28" Adjustable Height/Swing |

Mobile Shield on T-Base

Adjustable height mobile shield that adjusts from 8" to 60". Excellent for patient and staff protection during imaging procedures. All steel T-Base provides excellent stability and confidence in no-tipping. Easy movement around the room and the unique base allows easy positioning around equipment and wall stands. Posi-Lock height adjustable arm with spring-loaded pin. Includes a durable nylon covered shield.

At lowest adjustment, will slide under a bench or table



| Code | Description | Weight (approx) |
|------------|--|-----------------|
| MST | Frame Only | |
| MST-3024 | Mobile Shield with Curtain 30" L x 24" W - 0.5mm L.E. with velcro attachment | 27lbs |
| MST-3024-1 | Mobile Shield with Curtain 30" L x 24" W - 1.0 mm L.E. with bolt attachment | 37lbs |

Mobile Shield on H-Base

Adjustable height: up to 60". Post Height: 60". Base Overall Dimensions: 24" W x 24" D. All steel H-base for maximum stability. Hardened chrome steel post. Posi-Lock height adjustable arm with spring-loaded pin. Includes a durable nylon covered shield with **Bolt attachment only**.



| Code | Description | Weight (approx) |
|----------|--|-----------------|
| MSH | Frame Only | |
| MSH-3636 | Mobile Shield with Curtain 36" x 36" - 0.5mm L.E. with bolt attachment | 44lbs |
| MSH-4848 | Mobile Shield with Curtain 48" x 48" - 0.5mm L.E. with bolt attachment | 52lbs |

Porta Shield

Adjustable mobile shield with soft curtain. Adjustable height from 24" to 48". Preset holes in the frame allow for swift and easy adjustment. Frame sits on four heavy duty casters for easy movement. Base measurement is 24" x 22".

| Code | Description | Weight (approx) |
|---------|---|-----------------|
| PS5 | Porta Shield with Curtain 24" x 36" - 0.5mm L.E. | 40lbs |
| PS7 | Porta Shield with Curtain 24" x 36" - 0.75mm L.E. | 42lbs |
| PS10 | Porta Shield with Curtain 24" x 36" - 1.0mm L.E. | 45lbs |
| PS-CUST | Porta Shield - Custom | |



Mobile Curtain Barrier

Excellent for patient protection during standing diagnostic procedures such as erect chest and cervical spine. Includes a durable nylon covered .5mm L.E. shield. Five castor star leg base. The base offers a sturdy 24-inch diameter, to ensure smooth and stable transportation around the room. It comes in three parts for quick and easy assembly. The adjustable telescoping hole allows the shield height to be set by the user. The top of the shield can be as low as 36 inches, or as high as 60 inches.

| Code | Description | Weight (approx) |
|----------|--|-----------------|
| MS-2424 | Mobile Shield with Curtain 24" x 24" - 0.5mm L.E. - with velcro attachment | 23lbs |
| MS-2436 | Mobile Shield with Curtain 24" x 36" - 0.5mm L.E. - with velcro attachment | 25lbs |
| MS-2448 | Mobile Shield with Curtain 24" x 48" - 0.5mm L.E. - with velcro attachment | 28lbs |
| MS-CUST | Mobile Shield - Custom - 0.5mm L.E. | |
| MS2428SP | Mobile Shield with Split Panel Curtain 24" x 28" - 0.5mm L.E. - with bolt attachment | 32lbs |



Curtains

Curtains are ideal for areas where secondary or low-level radiation is present (Rooms and Doorways). Supplied with or without hard-ware. See pages 25-28 for fabric options.



| Code | Description |
|---------|--|
| DC5-27 | Doorway Curtain 24"x 84" - 0.5mm L.E. |
| DC5-47 | Doorway Curtain 48"x 84" - 0.5mm L.E. |
| DC10-27 | Doorway Curtain 24"x 84" - 1.0mm L.E. |
| DC10-47 | Doorway Curtain 48"x 84" - 1.0mm L.E. |
| DC-CUST | Doorway Curtain - Custom |
| RDC2 | Room Divider Curtain / per sq. ft. - 0.25mm L.E. |
| RDC5 | Room Divider Curtain / per sq. ft. - 0.5mm L.E. |
| RDC7 | Room Divider Curtain / per sq. ft. - 0.75mm L.E. |
| RDC10 | Room Divider Curtain / per sq. ft. - 1.0mm L.E. |
| TRA-4 | Doorway / Room Divider 4' 0" Track |
| TRA-8 | Doorway / Room Divider 8' 0" Track |
| TRO | Doorway / Room Divider Trolley (eacy) |

Lead Vinyl Sheets

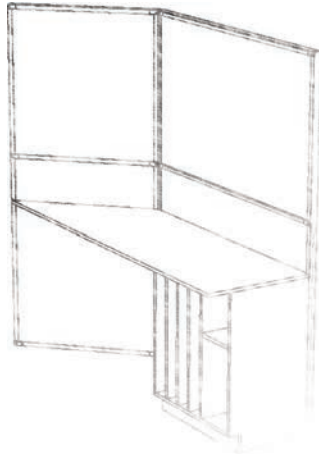
LeadX[®] is a smooth and flexible non-absorbent vinyl material that is easily cleaned.

Width options: 24" and 48".

| 0.25mm L.E. | | 0.5mm L.E. | | 1.0mm L.E. | |
|-------------|----------------------------|------------|-----------|------------|-----------|
| Code | Size | Code | Size | Code | Size |
| LX2-2424 | 24" x 24" | LX5-2424 | 24" x 24" | LX10-2424 | 24" x 24" |
| LX2-2436 | 24" x 36" | LX5-2436 | 24" x 36" | LX10-2436 | 24" x 36" |
| LX2-2448 | 24" x 48" | LX5-2448 | 24" x 48" | LX10-2448 | 24" x 48" |
| LX2-3648 | 36" x 48" | LX5-3648 | 36" x 48" | LX10-3648 | 36" x 48" |
| LX2-4848 | 48" x 48" | LX5-4848 | 48" x 48" | LX10-4848 | 48" x 48" |
| LX2-CUST | Custom | LX5-CUST | Custom | LX10-CUST | Custom |
| LX-PKG | Packaging Charge per Piece | | | | |



From Concept...



Control booths are available in both standard and custom sizes.

Available Options

Frames: Medical grade stainless steel or powder coated steel

Panel materials and finishes: Plastic, Steel and Laminates

Viewing Windows: Shatter resistant lead-acrylic or lead-glass

Furniture: Custom-fitted millwork

Colors to match your decor

Consultation and installation services available



...to Reality.

